

**THE
SPELMAN COLLEGE
FACT BOOK
FALL 2000-01**

**Office of Institutional Research, Assessment and
Planning
Division of Academic Affairs**

**Spelman College
Atlanta, Georgia**

May 2001

THE SPELMAN COLLEGE FACT BOOK FALL 2000-01

**Office of Institutional Research, Assessment and
Planning
Division of Academic Affairs**

**Natalie Dukes, B.A., Administrative Assistant
Barbara A. Brown, M.S., Associate Director of Institutional
Effectiveness and Proofreader
Gwendolyn M. Johnson, M.A.T., Associate Director of Research,
Compiler and Editor
John L. Johnson, Ph.D., Director**

May 2001

*Limited copies of this publication may be obtained from the Office of Institutional Research, Assessment and Planning; Spelman College; P.O.Box 875; 350 Spelman Lane, S.W.: Atlanta, Georgia 30314-4399
Telephone: (404)223-1434, Fax: (404)215-2577, E-mail Address: gjohnso1@spelman.edu*

Greetings!

The Spelman College Fact Book, Fall 2000-01 provides both current and longitudinal data about Spelman College and its constituencies. Most student data represent activity as of the fall semester of the indicated academic year, while information on areas such as faculty and budget are reflective of an entire academic year.

This document, composed primarily of summary demographic data on students and faculty, was compiled primarily for administrators, faculty and staff as a resource to aid in proposal writing, fund-raising, and survey completion. Though limited in scope, it should address many of the data needs of Spelman employees and the local community, as deemed necessary.

Please feel free to make constructive suggestions and recommendations based on requests similar to those included in the document. All comments and suggestions should be sent to me via my e-mail address which is gjohns01@spelman.edu or to my fax number, 404-215-2577.

This project was completed with the assistance of staff from each of the five divisions of the College: Academic Affairs, Business and Financial Affairs, Student Affairs, Institutional Advancement, and Media and Information Technology. I say "Thank You" to all who assisted.

Gwendolyn M. Johnson
Associate Director of Research

GENERAL INFORMATION

SPELMAN COLLEGE PROFILE
2000-01 ACADEMIC YEAR
DR. AUDREY F. MANLEY, PRESIDENT

General Information

<u>FOUNDED</u>	April 11, 1881
<u>TYPE</u>	Private
<u>AFFILIATION</u>	Independent
<u>CLASSIFICATION</u>	Baccalaureate I - Four-year Liberal Arts College for Women
<u>CAMPUS</u>	33 Acres, 23 Buildings
<u>CALENDAR</u>	Semester
<u>DEGREES OFFERED</u>	Bachelor of Arts, Bachelor of Science
<u>ADDRESS</u>	350 Spelman Lane, SW Atlanta, Georgia 30314-4399
<u>TELEPHONE NUMBER</u>	(404) 681-3643
<u>FAX NUMBER</u>	(404) 223-1449
<u>WEBSITE ADDRESS</u>	www.spelman.edu
<u>ACCREDITING AGENCY</u>	Commission on Colleges of the Southern Association of Colleges and Schools (SACS)
<u>MOODY RATING</u>	(AA)
<u>STANDARD AND POOR</u>	(A-1)
<u>MEMBERSHIPS</u>	Coalition of Women's Colleges, National Association of Schools of Music (NASM), National Council for the Accreditation of Teacher Education (NCATE), Southern Association of Colleges and Schools, The College Fund/UNCF, National Association for College Admissions Counseling
<u>COLORS</u>	Blue & White

Spelman College Profile

GRADUATION REQUIREMENTS

Minimal 120 credit hours; minimal 2.00 G.P.A. (with a minimum grade of "C" in all major and/or minor requirements)

COLLEGE-WIDE HONOR SOCIETIES

Alpha Chi National College Honor Scholarship Society, Golden Key National Honor Society, Alpha Lambda Delta (The National Freshman Honor Society), Mortar Board, Phi Beta Delta (International Honor Society), The Epsilon of Georgia Chapter of Phi Beta Kappa

LIBRARY

Robert W. Woodruff
(Atlanta University Center)

DEGREES AND MAJORS (25)

Bachelor of Arts: Art, Child Development, Comparative Women's Studies, Drama, Economics, English, French, History, Human Services, Independent Major, Mathematics, Music, Philosophy, Political Science, Psychology, Religion, Spanish, Sociology, Sociology and Anthropology

Bachelor of Science: Biochemistry, Biology, Chemistry, Computer and Information Sciences, Engineering/Dual Degree, Mathematics, Natural Sciences with a concentration in Environmental Sciences or Physics

SPECIAL PROGRAMS

ADAMHA-MARC Honors (AUC), UMARC Honors (AUC), Continuing Education, Domestic Exchange, Dual Degree in Engineering, Ethel Waddell Githii Honors, ROTC, Pre-freshmen Summer Science, Summer Science and Engineering, Study Abroad, Women's Studies, Freshman Studies Program, International Affairs Center

Spelman College Profile

FINANCIAL AID AND SCHOLARSHIPS

Federal and State Need-based Financial Aid Programs: FSEOG, Federal Pell Grant, Federal Perkins Loan Program, Federal Stafford Loan Program, Federal Plus Loan and Unsubsidized Stafford, Georgia Tuition Grant Program, State Direct Student Loan for Teacher Training in Mathematics, Science, and Special Education

Scholarships: Georgia Hope, DeWitt Wallace, Presidential, Dean's, Bonner, Women in Science and Engineering (WISE), Academic Excellence, DeWitt Wallace Service, DeWitt Wallace for International Students, other Spelman Funded Scholarships

SUPPORT SOURCES/ PROGRAMS

Assessment of Student Learning; Bonner Scholars Program; Career Planning and Development; Community Service; Comprehensive Writing; Computing and Information Technology; Counseling Services; Disability Services; Freshman Success; Graduate School Relations; Health Careers; Health Services; Learning Resources Center; Mathematics Tutorial Services; Foreign Languages Tutorial Services; Public Safety; Science, Engineering, & Technical Careers; Science Tutoring; Spelman College Museum of Fine Arts; Student Affairs; Student Financial Services; Women's Research and Resource Center

HONOR SOCIETIES

Beta Kappa Chi, Golden Key Club, Mortar Board, Phi Beta Delta, Phi Beta Kappa, Pi Kappa Lambda, Pi Sigma Alpha, Senior Honor Society, Sigma Tau Delta

ACTIVITIES AND ORGANIZATIONS

Spelman Student Government Association; The African Sisterhood (AST); Greek Letter Organizations: Alpha Kappa Alpha, Delta Sigma Theta, Sigma Gamma Rho and Zeta Phi Beta; Numerous chartered Academic and Professional Clubs; various chartered religious organizations

STUDENT PUBLICATIONS

Spotlight (newspaper), *Reflections* (yearbook)

2000-01 Summary Statistics

ADMISSIONS

First-time Freshmen:
Completed Applications - 3,266
Offered Admission - 1,721
Registered - 576
Average SAT I Scores:
Verbal - 537, Math - 522, Total - 1,059
Average ACT Composite Score - 22

STUDENT BODY

Headcount - 2,127
F.T.E. - 2,100
Female - 100%
African American - 96%
Classification:
First-time Freshmen - 576 (27%)
Other Freshmen - 135 (6%)
Sophomores - 501 (24%)
Juniors - 504 (24%)
Seniors - 389 (18%)
Unclassified - 22 (1%)
Residency:
Georgia - 583 (27%)
Other States - 1,544 (73%)
Foreign Countries - 54 (3%)
Foreign Countries (U.S. Citizens) - 4

GRADUATES - May, 1999

Total - 422
B.A. Degrees - 323 (77%)
B.S. Degrees - 99 (23%)

GRADUATION RATE

Four-year Rate (Entering Cohorts '93-95) - 64%
Five-year Rate (Entering Cohorts '92-94) - 74%
Six-year Rate (Entering Cohorts '91-93) - 75%

COSTS (AY '99-00)

Tuition - \$9,260
Room & Board - \$6,730
Fees - \$1,455
Books & Supplies - \$1,196 (estimated)
Personal Expenses - \$1,736 (estimated)
Transportation - \$1,085 (estimated)

FINANCIAL AID RECIPIENTS
(AY '00-01)

86%

HOUSING

On Campus - 1,167 (55%)

Spelman College Profile

Off Campus - 960 (45%)

ANNUAL BUDGET \$50,294,829

ENDOWMENT (6/30/00) \$219,753,534

INSTRUCTIONAL FACULTY Full-time Headcount - 145
Doctorates/Other Terminal Degrees - 118 (81%)
Male - 52 (36%), Female - 93 (64%)
Rank: Professor - 22 (15%)
Associate Professor - 62 (42%)
Assistant Professor - 34 (23%)
Instructor - 6 (4%)
Lecturer - 21 (15%)
Tenure Status: Tenured - 78 (54%)
Tenure Track - 19 (13%)
Non-Tenure Track - 48 (33%)
Race: Black - 97 (67%)
White - 31 (21%)
Other/Unknown - 8 (6%)
Asian - 9 (6%)
Part-time Headcount - 50 (3%)

STUDENT/FACULTY RATIO 13:1

APPLICATION REQUESTS The Office of Admissions and Orientation
Services; Spelman College; 350 Spelman Lane, S.W.;
Atlanta, GA 30314-4399; Tel. # - 1-800-982-2411

Prepared by: Gwendolyn M. Johnson, Associate Director of Institutional Research, Assessment & Planning, Spelman College, 5/25/01

A CHRONOLOGY OF SPELMAN COLLEGE

Source: Adapted from the Spelman College

- 1881: Spelman was founded by Miss Sophia B. Packard and Miss Harriet Giles; location, basement of Friendship Baptist Church; starting funds - \$100; enrollment - 11.
- 1882-1883: Windfall option to purchase property of current cite presented; purchase made, leaving a \$15,000 balance; title transferred to the "Atlanta Baptist Female Seminary;" relocation to current cite.
- 1884: Celebration of third anniversary of Spelman's founding on April 11th; Mr. John D. Rockefeller paid off remainder of the aforementioned \$15,000 property debt; name changed to "Spelman Seminary" in honor of Mrs. Rockefeller's mother; birth of the "Spelman Messenger."
- 1885-1887: Building of Rockefeller Hall, the first major edifice constructed on the cite (funds donated by Mr. Rockefeller); construction of Packard Hall.
- 1891-1909: Miss Harriet Giles served as President, conferring the first college degrees in 1901; the twenty-fifth anniversary was celebrated in 1906; Spelman served the needs of thousands of black women from grade school through trade school and college; Miss Giles died November 12, 1909.
- 1910-1927: Miss Lucy Tapley served as President; the name was officially changed to "Spelman College" on June 1, 1924; the reality of Spelman as an all-purpose academy gradually changed and Spelman became known as a training ground for teachers; the Board of Trustees voted to discontinue the elementary school by the end of Miss Tapley's administration in 1927; Sister's Chapel was dedicated in May, 1927.
- 1927-1953: Miss Florence Matilda Read reigned as President; Spelman established an endowment fund which eventually totaled more than \$2,000,000; the commitment was made that Spelman would become a first-rate liberal arts college rather than a training ground for teachers; an "Agreement of Affiliation" between Spelman, Morehouse, and Atlanta University was signed in April, 1929 forming a university system; the addition of Morris Brown and Clark Colleges, and Gammon Seminary later changed the system to the "Atlanta University Center;" Miss Read retired on July 1, 1953.
- 1953-1975: Dr. Albert E. Manley became the first black, as well as the first male to serve as President of Spelman; the College survived the unrest of the civil rights movement, campus unrest and revolution, the youth

revolution, the feminist and sex revolutions, rounds of runaway inflation, among other chronic survival tests for independent education; the young women were encouraged to become leaders and to enter non-traditional areas of employment, as well as prepared and encouraged to enter the best graduate and professional schools in the country; travel and study abroad opportunities were created; Dr. Manley retired in 1976; Dr. Manley died in 1997.

1976-1986: Dr. Donald M. Stewart became the sixth President of Spelman College; the academic program was strengthened with the development of a full-fledged Chemistry department; the curriculum was reviewed and revised; a writing workshop was developed; the Honors Program, the Continuing Education Program for the non-traditional student, and the Computer Literacy Program which impacted on all members of the campus community were initiated and implemented; two buildings were erected, the Donald and Isabel Stewart Living-Learning Center and the Academic Computer Center; the endowment increased significantly from \$9 million to \$41 million; Dr. Stewart elected to end his tenure in December, 1986 to become President of the College Board.

1987-1997: Dr. Johnnetta Betsch Cole, former professor of Anthropology at Hunter College and Director of Latin American and Caribbean Studies at the City University of New York, became the first African American female President of Spelman College on July 1, 1987; a mentorship program was added; a Physics Department, the International Affairs Center and the Dow Jones/Spelman College Entrepreneurial Center were established; an Office of Community Service and The Corporate Partners Program were instituted, along with the completion of the largest capital campaign in the history of Spelman; the College earned the distinction of having the second highest endowment of Historically Black Colleges and Universities in this country while under Dr. Cole's leadership; Dr. Cole retired in 1997.

1997-Present: Dr. Audrey Forbes Manley is the first alumna to serve as President of Spelman College. As the eighth President of the College, she is focused on positioning Spelman College for success well into the next century with the development of a Master Plan that will address the institution's needs into the year 2010 and beyond. Dr. Manley's *Action Agenda* for Spelman addresses the quality of living and learning in the college community, enhancement of the technological infrastructure, geographic expansion, community revitalization, and strengthening the philanthropic potential of alumnae.

THE SPELMAN COLLEGE STATEMENT OF PURPOSE

Modified Version, Spelman College Institutional Self-Study, December 1999

An outstanding historically black college for women, Spelman promotes academic excellence in the liberal arts. This predominantly residential private college provides students with an academic climate that develops their intellectual and leadership potential. The College is a member of the Atlanta University Center consortium, and Spelman students enjoy the benefits of a small college while having access to the resources of the other five participating institutions.

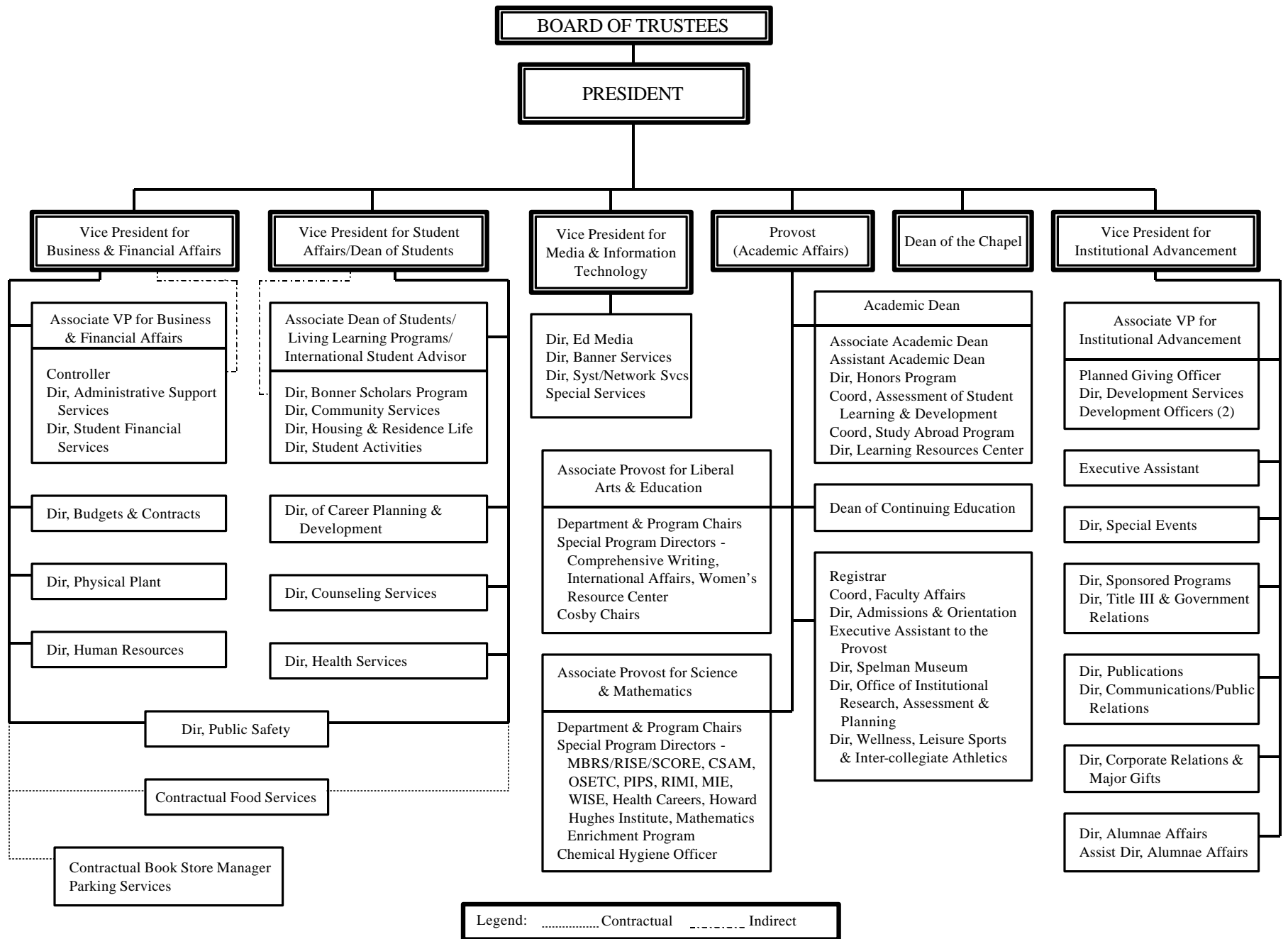
The educational program at the College is designed to give students a comprehensive liberal arts background through study in the fine arts, humanities, social sciences, and natural sciences. Students are encouraged to think critically and creatively and to improve their communicative, quantitative, and technological skills. The academic program prepares students for graduate and professional study as well as entry into the world of work. Spelman seeks to empower the total person. The College provides an environment that enables self-confidence, cultural enrichment, and spiritual well being. This environment attempts to instill in students an appreciation for the many cultures of the world, a willingness to serve the community, and a sense of responsibility for bringing about positive change.

Spelman offers an educational experience characterized by excellence. It reinforces a sense of pride and hope, develops character, and inspires the love of learning. The programs of the College rest on the expectation that the students, the community, and society at large will benefit from a liberal arts education. Spelman has been and expects to continue to be a major resource for educating black women leaders.

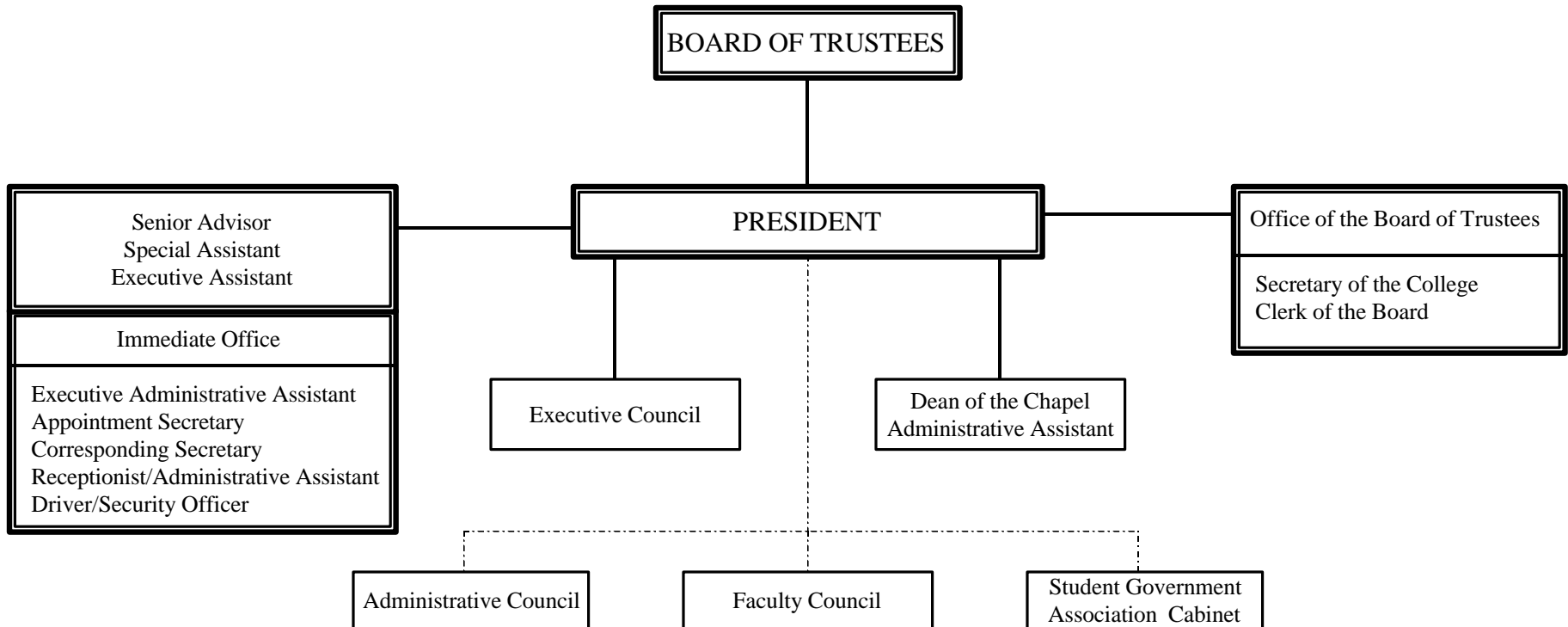
ADMINISTRATIVE ORGANIZATION

ORGANIZATIONAL CHARTS

2000-01 ORGANIZATIONAL CHART - SPELMAN COLLEGE

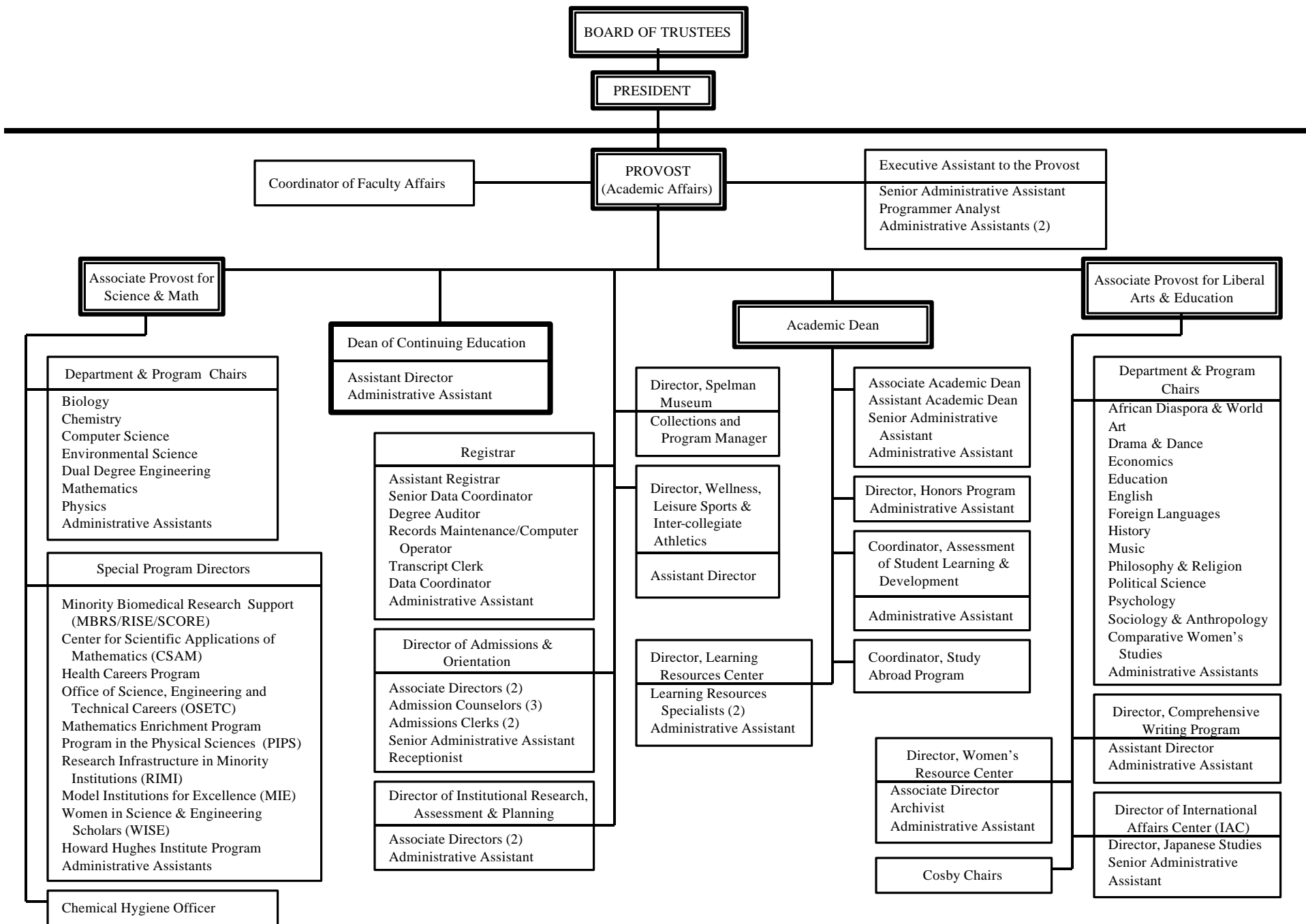


2000-01 ORGANIZATIONAL CHART - OFFICE OF THE PRESIDENT

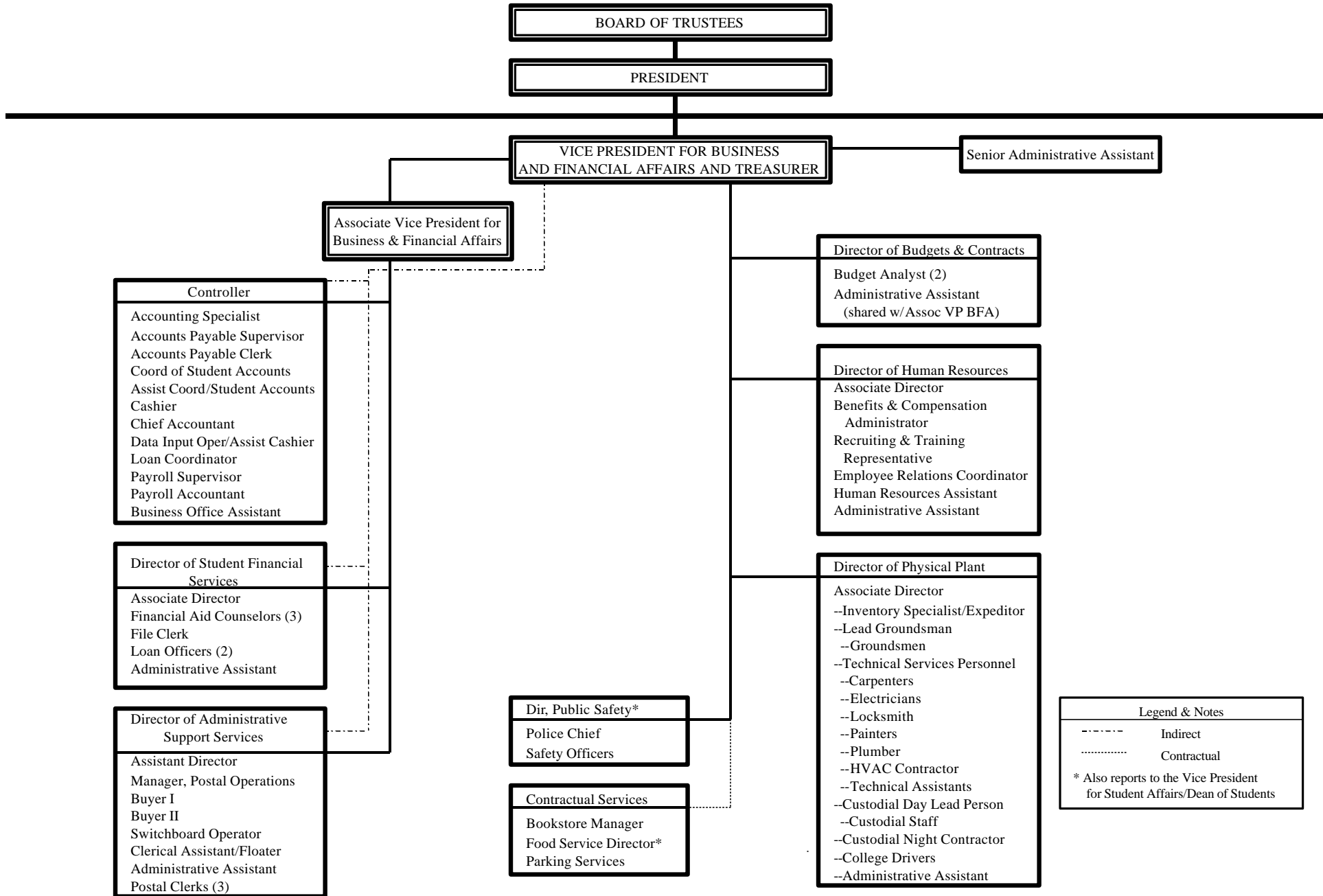


Legend: Direct Report
 Communication

2000-01 ORGANIZATIONAL CHART - DIVISION OF ACADEMIC AFFAIRS

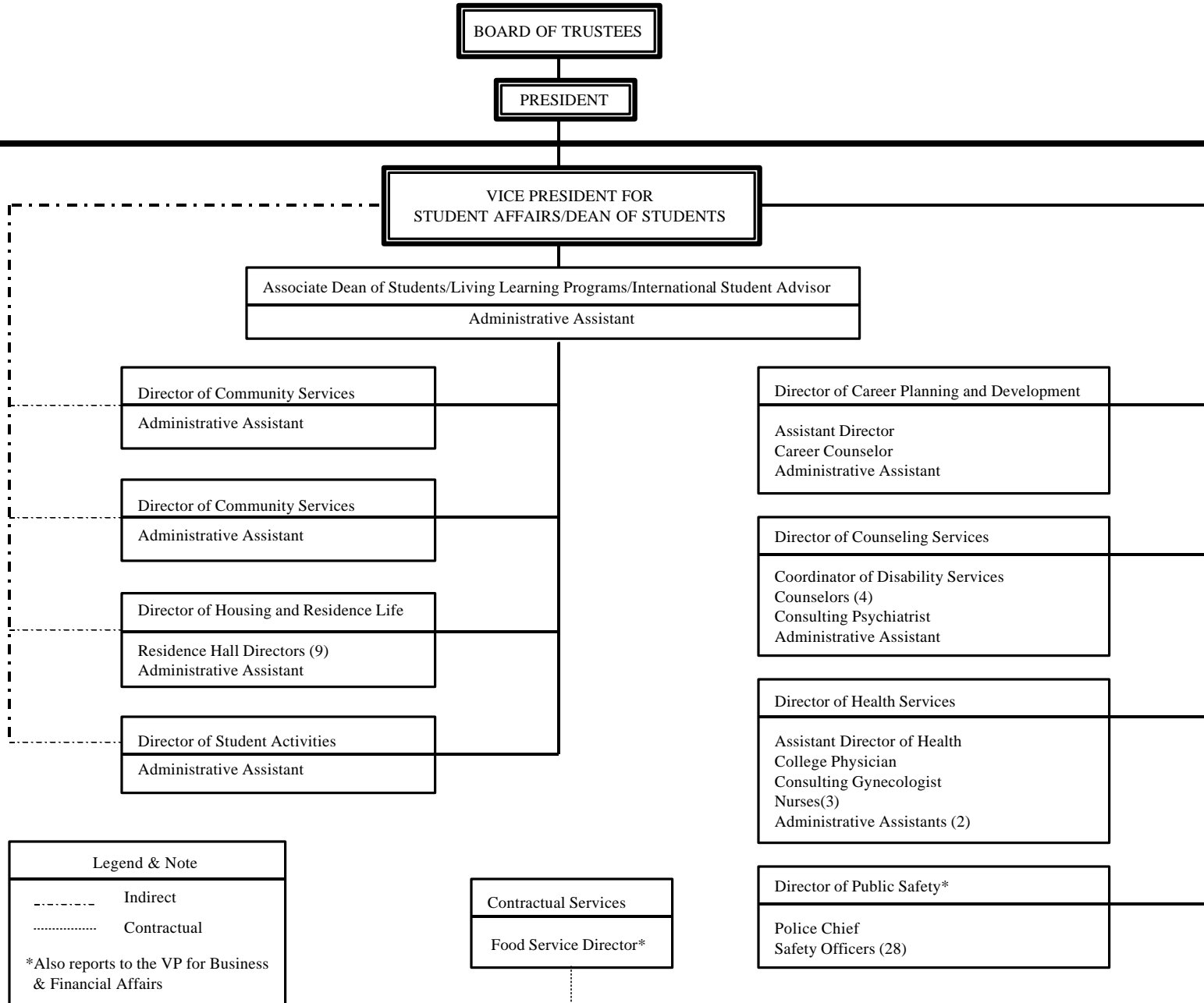


2000-01 ORGANIZATIONAL CHART - DIVISION OF BUSINESS & FINANCIAL AFFAIRS

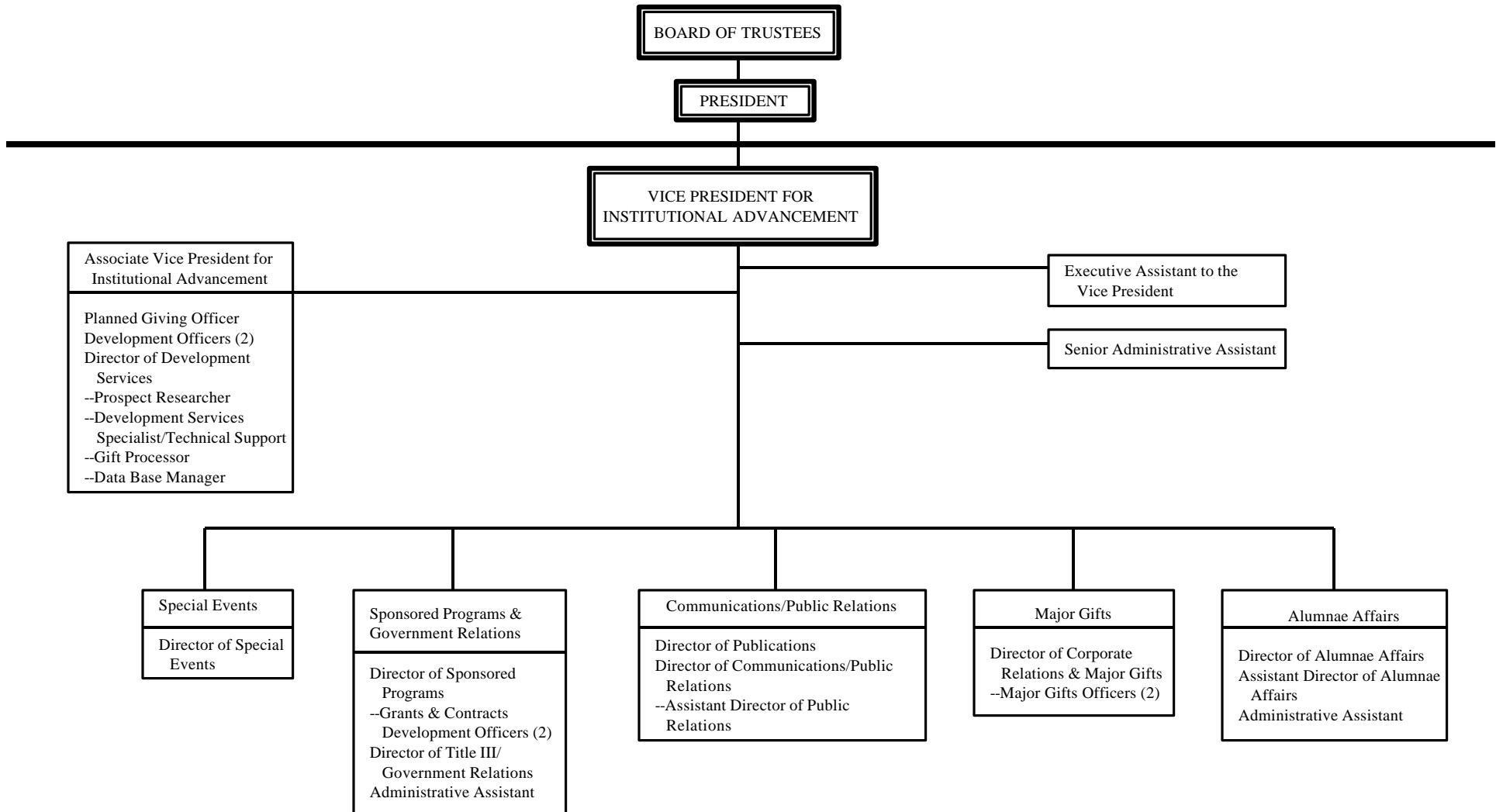


Legend & Notes	
- - - - -	Indirect
.....	Contractual
* Also reports to the Vice President for Student Affairs/Dean of Students	

2000-01 ORGANIZATIONAL CHART - DIVISION OF STUDENT AFFAIRS



2000-01 ORGANIZATIONAL CHART - DIVISION OF INSTITUTIONAL ADVANCEMENT



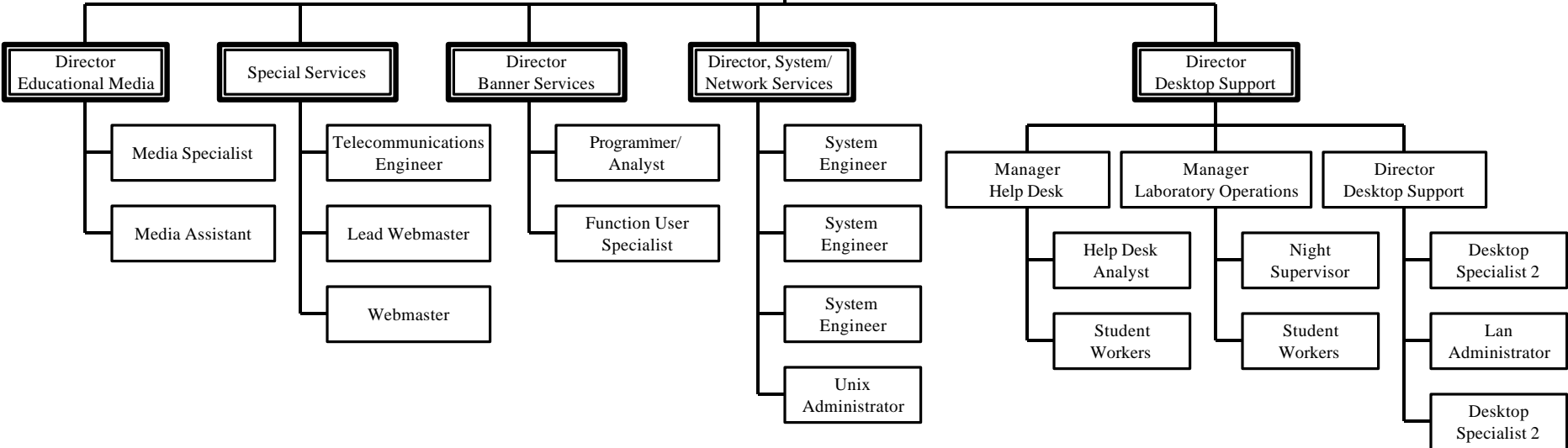
2000-01 ORGANIZATIONAL CHART - DIVISION OF MEDIA & INFORMATION TECHNOLOGY

BOARD OF TRUSTEES

PRESIDENT

VICE PRESIDENT FOR
MEDIA & INFORMATION TECHNOLOGY

Administrative Assistant



PERSONNEL

**SENIOR STAFF
2000-01
SPELMAN COLLEGE**

PRESIDENTDr. Audrey F. Manley

SENIOR ADVISOR TO THE PRESIDENT.....Dr. Etta Z. Falconer

INTERIM PROVOST.....Dr. Pauline E. Drake

VICE PRESIDENT FOR BUSINESS AND
FINANCIAL AFFAIRS AND TREASURERMr. Robert D. Flanigan, Jr.

VICE PRESIDENT FOR INSTITUTIONAL
ADVANCEMENTMrs. A. Trisa Long Paschal

VICE PRESIDENT FOR STUDENT
AFFAIRSDr. Zenobia Hikes

VICE PRESIDENT FOR MEDIA AND
INFORMATION TECHNOLOGYMr. Ellis Rainey

ASSOCIATE PROVOST FOR LIBERAL ARTS
AND EDUCATIONDr. Romie Tribble

ASSOCIATE PROVOST FOR SCIENCE PROGRAMS
AND MATHEMATICSDr. Sylvia T. Bozeman

ACADEMIC DEAN..... Dr. Cynthia Neal Spence

ADMINISTRATIVE PERSONNEL
(Senior Staff Members Not Listed)
2000-01
SPELMAN COLLEGE

Office of the President

Secretary of the College Lisa Smith Flagg

Division of Academic Affairs

Office of the Provost

Executive Assistant to the Provost Vacant
Coordinator, Faculty Affairs Ms. Virginia F. Roberts
Interim Dean, Continuing Education Ms. Sharon Akiele
Interim Director, Admissions and Orientation Services.....Ms. Theodora Riley
Coordinator, Learning Resources CenterMs. Christine K. Farris
Learning Resources Specialist.....Ms. Cynthia Hodges-Atkins
Learning Resources Specialist..... Ms. Lula Roberts
Director, Institutional Research, Assessment &
Planning Dr. John L. Johnson
Associate Director, Institutional Research,
Assessment & Planning Ms. Gwendolyn M. Johnson
Associate Director, Institutional Effectiveness Ms. Barbara A. Brown
Registrar Dr. Fred W. Buddy
Assistant Registrar Ms. Ethel Poole

Office of the Academic Dean

Associate Dean Dr. Kai Jackson
Assistant Dean Vacant
Coordinator, Assessment of Student
Learning and Development Dr. B. LaConeya Butler
Coordinator, Study Abroad Program Dr. Margery Ganz
Director, Ethel Githii Honors Program Dr. James Winchester

Office of the Associate Provost for Liberal Arts and Education

Archivist..... Ms. Taronda Spencer
Interim Director, Comprehensive Writing Program..... Dr. Nicholas Mauriello
Director, International Affairs Center (IAC) Dr. Jeanne Meadows
Director, Japanese Studies Program..... Dr. Yoko Ueda

Director, Women's Resource CenterDr. Beverly Guy-Sheftall
Associate Director, Women's
Resource Center..... Dr. M. Bahati Kuumba

Associate Provost for Science and Mathematics

Director, Office of Technical CareersMs. Marquette Brown
Director, Health Careers Program Dr. Barbara Bell
Director, Center for Scientific Applications
of Mathematics (CSAM) Dr. Fred Bowers
Director, Minority Biomedical Research
Support Programs (MBRS)..... Dr. Lisa Hibbard
Director, Women in Science and Engineering
Scholars Program (NASA) Dr. Cornelia Gillyard

Division of Business and Financial Affairs

Associate Vice President for
Business & Financial Affairs Mr. John Cunningham, Jr.
Controller Mr. Mahesh Mehrotra
Director, Administrative Support Services.....Ms. Edith Williams
Assistant Director, Administrative Support Services Ms. Leann Keepler
Director, Budgets & ContractsMs. Rhonda Honegan
Interim Director, Human Resources Ms. Demetria Holloway
Director, Physical Plant Mr. John Bowden
Associate Director, Physical PlantMr. Albert Smith
Director, Public SafetyMr. Steve Bowser
Police Chief Mr. Joseph Milligan
Director, Student Financial Services Ms. Lenora Jackson
Associate Director, Student Financial Services Ms. Thresa Gay

Division of Institutional Advancement

Associate Vice President Mr. Shereitte Stokes, III
Director, Alumnae Affairs Ms. Eloise Abernathy
Director, Development Services..... Ms. Betsy Jackson
Planned Giving Officer Ms. Marian Parker
Director, Government Relations & Title III Mr. Ivan Page
Director, Major Gifts Ms. Karen Clay
Director, Public Relations Vacant
Director, Publications Ms. Jo Moore Stewart
Director, Special Events Mr. George Robinson
Director, Sponsored Programs Ms. Olivia Scriven

Division of Student Affairs

Office of the Vice President for Student Affairs

Director, Career Planning & Development Vacant
Director, Counseling Services Ms. Vanessa Mahmoud
Director, Health Services Ms. Brenda Dalton
Director, Public Safety Mr. Steve Bowser
Chief of Police Mr. Joseph Milligan
Advisor to the International Students Ms. Teresa Johnson
Associate Dean of Students / Living Learning Programs Ms. Teresa Johnson
Coordinator, Disability Services Ms. Merrine McDonald
Director, Community Service Dr. Victoria Durant-Gonzalez
Director, Housing and Residence Life Ms. Katrina Dorsey
Director, Student Activities Ms. Pamela Anthony
Director, Bonner Scholars Program Ms. Felecia Smith

Division of Student Affairs

Division of Media and Information Technology

Director, Ed Media Mr. William Ransom
Director, Banner Operations Ms. Mary Elias
Director, Network/System Services Mr. Jin Zhang
Director, Desktop Operations Ms. Chandra McCrary

**DEPARTMENT CHAIRPERSONS
2000-01 ACADEMIC YEAR
SPELMAN COLLEGE**

ART.....	Mr. Lev Mills
BIOLOGY	Dr. Pamela Gunter-Smith
CHEMISTRY	Dr. Cornelia Gillyard
COMPUTER & INFORMATION SCIENCES.....	Dr. Andrea Lawrence
DRAMA & DANCE	Dr. Veta Goler
ECONOMICS	Dr. Anne Hornsby
EDUCATION	Dr. Marshalita Peterson
ENGLISH	Ms. Opal Moore
FOREIGN LANGUAGES	Dr. Anthony Dahl
HISTORY.....	Dr. Margery Ganz
MATHEMATICS.....	Dr. Jeffrey Ehme
MUSIC.....	Dr. Joyce Johnson
PHILOSOPHY & RELIGION	Dr. Roy Martinez
PHYSICS	Dr. Derrick Hylton
POLITICAL SCIENCE	Dr. Desiree Pedescleaux
PSYCHOLOGY	Dr. Myra Burnett
SOCIOLOGY & ANTHROPOLOGY	Dr. Daryl White

BOARD OF TRUSTEES
2000-01
SPELMAN COLLEGE

J. Veronica Biggins
Partner
Heidrick & Struggles
Atlanta, Georgia

Bruce Wade, Ph.D. (*Faculty Trustee*)
Assoc. Professor of Sociology and Anthropology
Spelman College
Atlanta, Georgia

Lisa D. Cook, Ph.D.
Lecturer and Deputy Director
Harvard University
Cambridge, Massachusetts

Russell Edgerton, Ph.D.
Director, Education Programs
Pew Charitable Trusts
Philadelphia, Pennsylvania

Shirley C. Franklin
President
Urban Environmental Solutions, LCC
Atlanta, Georgia

Robert Holland, Jr. (*Board Vice Chair*)
Consultant
Work Place Integrators
Bingham Farms, Michigan

June Gary Hopps, Ph.D. (*Board Chair*)
Dean and Professor Emerita
Boston College Graduate School of Social Work
Chestnut Hill, Massachusetts

LaTanya Richardson Jackson
Actress
Encino, California

Ray Robinson
President
Southern Region AT&T
Atlanta, Georgia

Yvonne R. Jackson
Senior Vice President/HR
Compaq Computer Corporation
Houston, TX

Juan D. Johnson
Coca Cola
Atlanta, GA

Audrey F. Manley, M.D.
President
Spelman College
Atlanta, Georgia

Ray Marshall, Ph.D.
Professor Emeritus
University of Texas at Austin
Austin, Texas

Allen P. McDaniel
Managing Director
Salomon Smith Barney, Inc.
Atlanta, Georgia

Vicki R. Palmer
Vice President and Treasurer
Coca-Cola Enterprises, Inc.
Atlanta, Georgia

Ronald B. Richard
President
Panasonic Strategic Ventures Co.
Secaucus, New Jersey

Stephanie St. Louis (*Student Trustee*)
Spelman College
Atlanta, Georgia

Robert D. Storey, Esq.
Attorney-at-Law
Thompson Hine & Flory P.L.L.
Cleveland, Ohio

Board of Trustees
1999-00

Valerie R. Carnegie
Teacher
Sydney, Australia

Ronda Stryker
Stryker Corporation
Portage, Michigan

S. Stephen Selig, III
President
Selig Enterprises, Inc.
Atlanta, Georgia

Jonathan L. Smith
Managing Member
Chesapeake Asset Management, LLC
New York, New York

REPRESENTATIVES TO THE BOARD

Phoebe L. Bailey, Ph.D.
(Alumnae Representative)
President
National Alumnae Association of Spelman College
Lithonia, Georgia

Veta Goler, Ph.D.
(Faculty Representative)
Associate Professor of Dance
Spelman College
Atlanta, Georgia

Tamaria Kai Perry
(Student Representative)
SGA President
Spelman College
Atlanta, Georgia

Board of Trustees
1999-00

LIFE TRUSTEES

Laura Rockefeller Chasin
Civic Worker
Cambridge, Massachusetts

Peggy Dulany, Ed.D.
President
The Synergos Institute
New York, New York

Marian Wright Edelman, Esq.
The Children's Defense Fund
Washington, D.C.

Donald L. Hollowell, Esq.
Retired Attorney-at-Law
Atlanta, Georgia

Sarah S. McAlpin
Chair Emerita
Princeton, New Jersey

Elizabeth McCormack, Ph.D.
Rockefeller Family & Associates
New York, New York

G.G. Michelson
Retired
R.H. Macy Company, Inc.
New York, New York

Mary Brookins Ross, Ph.D.
President Emerita, Women's Auxiliary
National Baptist Convention USA, Inc.
Detroit, Michigan

Mabel Smythe-Haith, Ph.D.
Consultant
Washington, D.C.

Carolyn D. Yancey
Atlanta Board of Education
Atlanta, Georgia

HONORARY TRUSTEES

Nancy Green
Civic Worker
Atlanta, Georgia

Lucy Vance
Civic Worker
Atlanta, Georgia

Wanda S. Lloyd
Executive Director
Institute for Newsroom Diversity
Nashville, Tennessee

**BOARD OF TRUSTEES
MEMBERSHIP PROFILE
2000-01
SPELMAN COLLEGE**

Total	23 (Includes president, student, and faculty trustees)	
Gender		
	Female	11
	Male	12
Ethnicity		
	African American	14
	Caucasian	9
Industry*		
	Corporate	10
	Academic	7
	Civic	1
	President/CEO	6
	Consulting	1
Region		
	Atlanta	11
	North-Northeast	8
	Mid America/West	3
	South, not Atlanta	0
	International	1
Alumnae		6

*Some categories overlap and are counted twice.

**DISTRIBUTION OF STAFF
FALL 2000-01
SPELMAN COLLEGE**

<u>Administrators*</u>	Full-time		Part-time	
	Male	Female	Male	Female
Senior	1	5	---	---
Middle Level	13	18	---	---
Other	<u>10</u>	<u>65</u>	---	<u>2</u>
Subtotal	24	88	0	2
 <u>Support Personnel</u>				
Clerical & Secretarial	3	56	---	2
Physical Plant	24	26	---	---
Security	5	10	15	3
Other	<u>5</u>	<u>26</u>	<u>---</u>	<u>---</u>
Subtotal	37	118	15	5
 <u>Researchers**</u>	---	5	---	---
 TOTAL	<u><u>61</u></u>	<u><u>211</u></u>	<u><u>15</u></u>	<u><u>7</u></u>

*Includes administrators with faculty rank who teach on a part-time basis

Administrators: Senior - president, vice presidents, and deans, e.g.

Middle Level - assistant vice presidents, directors, managers and coordinators, e.g.

Other - assistant directors, supervisors, e.g.

**Persons without teaching duties; graduate assistants included

SOURCE: Office of Human Resources

ADMISSIONS STATISTICS

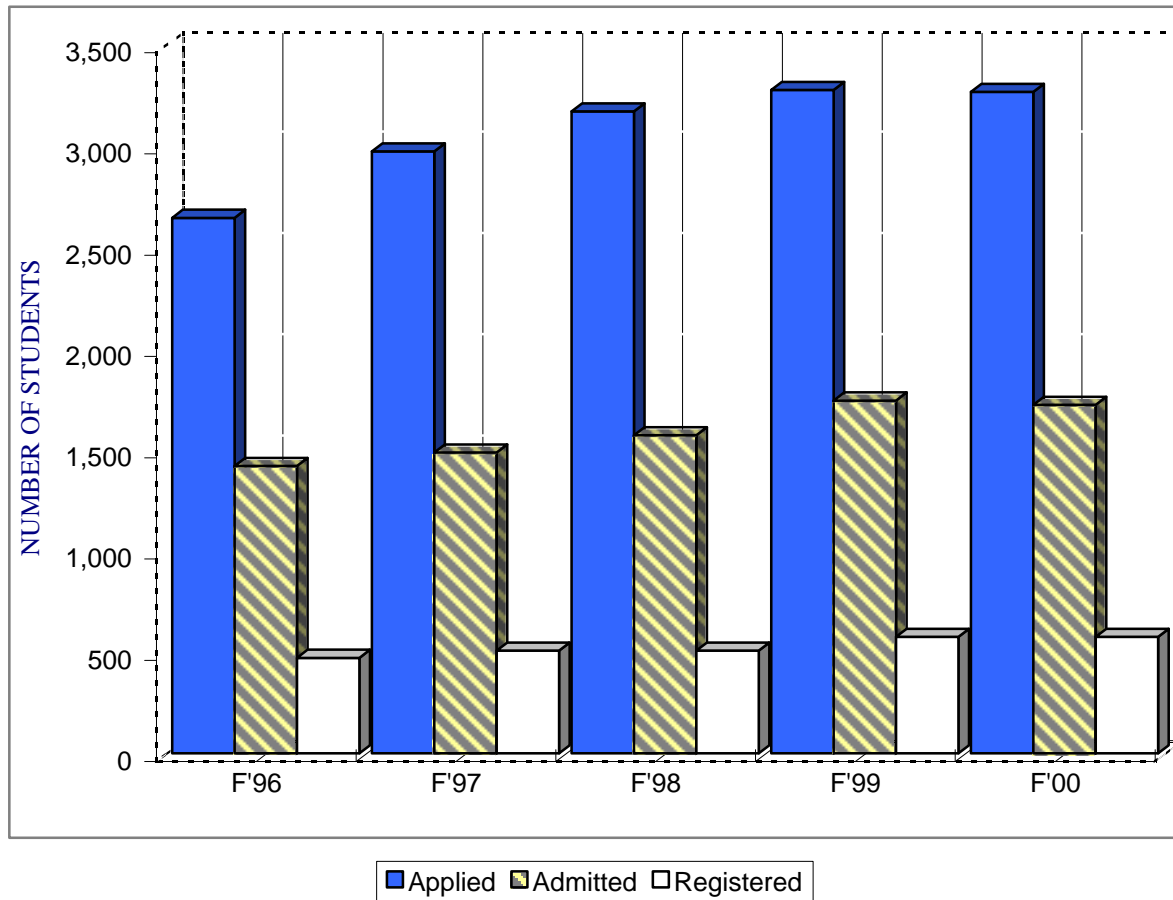
**STUDENTS WHO APPLIED, WERE ACCEPTED, AND REGISTERED
FALL SEMESTERS, 1996-97 THROUGH 2000-01
SPELMAN COLLEGE**

	1996-97		1997-98		1998-99		1999-00		2000-01	
	N	%	N	%	N	%	N	%	N	%
ENTERING FRESHMEN										
A. Applied	2,644		2,972		3,170		3,275		3,266	
B. Admitted	1,419	54	1,485	50	1,571	50	1,742	53	1,721	53
C. Registered	472	33	508	34	507	32	576	33	576	33
TRANSFERS										
A. Applied	108		144		180		150		134	
B. Admitted	34	32	70	49	70	37	56	37	36	27
C. Registered	19	56	37	53	29	52	26	46	17	47

NOTE: This table does not include statistics on the students who applied or enrolled in the "Special" or "Guest" categories. Percentage admitted is of those students who applied, and percentage registered is of those students admitted.

SOURCES: The Offices of Admissions and Orientation Services, and Institutional Research, Assessment and Planning

**ADMISSIONS STATUS--FRESHMAN APPLICANTS
FALL 1996-97 THROUGH FALL 2000-01
SPELMAN COLLEGE**



See data on previous page

SOURCE: Office of Institutional Research, Assessment and Planning

**SCHOLASTIC APTITUDE TEST SCORES
MEAN AND PERCENT CHANGE
SPELMAN COLLEGE ENTERING FRESHMEN
FALL 1990-91 THROUGH 2000-01**

-----SAT-----

Year	Verbal	Change	Mathematics	Change	Total	Change
1990-91	475	---	503	---	978	---
1991-92	468	-1%	493	-2%	961	-2%
1992-93	464	-1%	492	0%	956	-1%
1993-94	487	5%	515	5%	1,002	5%
1994-95	490	1%	516	0%	1,006	0%
1995-96	483	-1%	514	0%	997	-1%

-----SAT I-----

1996-97	549	---	524	---	1,073	---
1997-98	545	-1%	524	0%	1,069	0%
1998-99	546	0%	528	1%	1,074	0%
1999-00	541	-1%	521	-1%	1,062	-1%
2000-01	537	-1%	522	0%	1,059	0%

Change (1990-91 to 1995-96) (SAT): Verbal - 2%, Mathematics - 2%, Total - 2%

Change (1996-97 to 2000-01) (SAT I): Verbal - -2%, Mathematics - -0%, Total - -1%

Note: "Change" as reflected in the columns above represents the percentage increase or decrease from year-to-year.

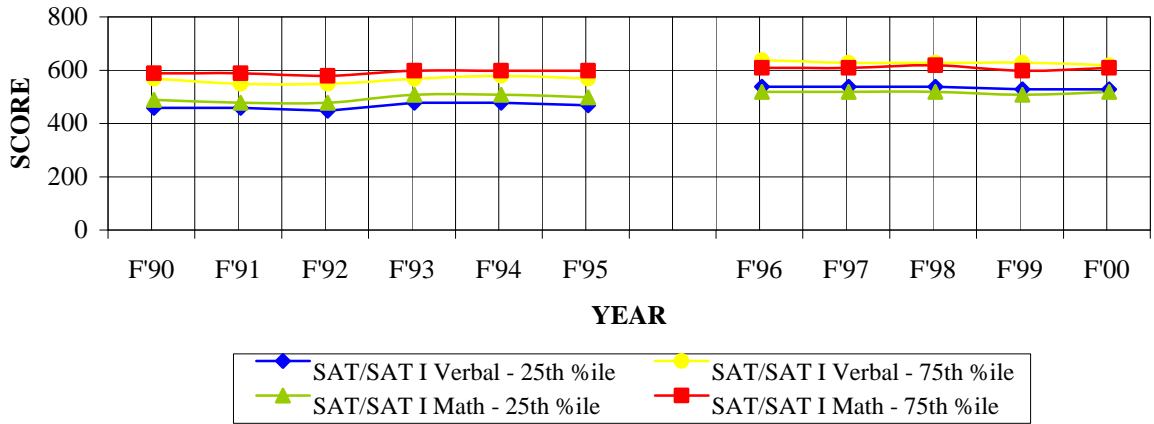
SAT I scores cannot be compared directly to SAT scores.

SOURCE: Office of Institutional Research, Assessment & Planning

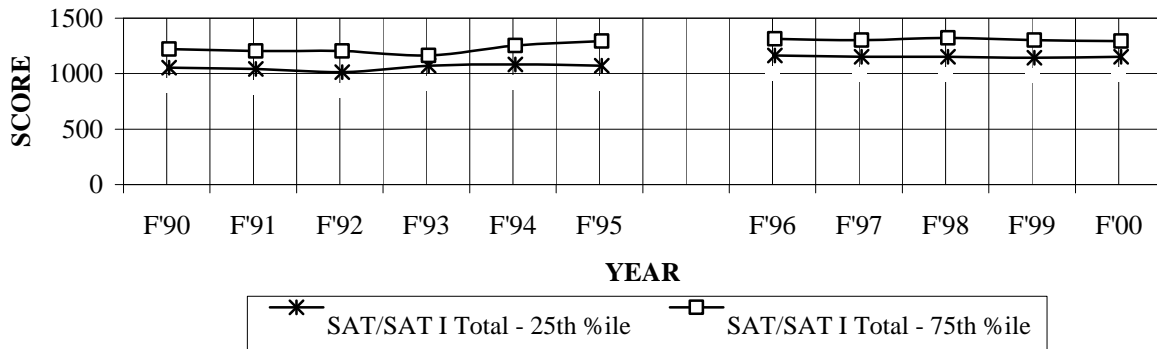
**SAT/SAT I - 25th and 75th PERCENTILE SCORES
FALL 1990-91 THROUGH 2000-01
SPELMAN COLLEGE**

Category	SAT						SAT I				
	F'90	F'91	F'92	F'93	F'94	F'95	F'96	F'97	F'98	F'99	F'00
SAT/SAT I Verbal - 25th %ile	420	420	410	440	440	430	500	500	500	490	490
SAT/SAT I Verbal - 75th %ile	530	510	510	530	540	530	600	590	590	590	580
SAT/SAT I Math - 25th %ile	450	440	440	470	470	460	480	480	480	470	480
SAT/SAT I Math - 75th %ile	550	550	540	560	560	560	570	570	580	560	570
SAT/SAT I Total - 25th %ile	890	880	850	910	920	910	1000	990	990	980	990
SAT/SAT I Total - 75th %ile	1,060	1,040	1,040	1,000	1,090	1,130	1,150	1,140	1,160	1,140	1,130

Verbal and Mathematics



Total



SOURCE: Office of Institutional Research, Assessment and Planning

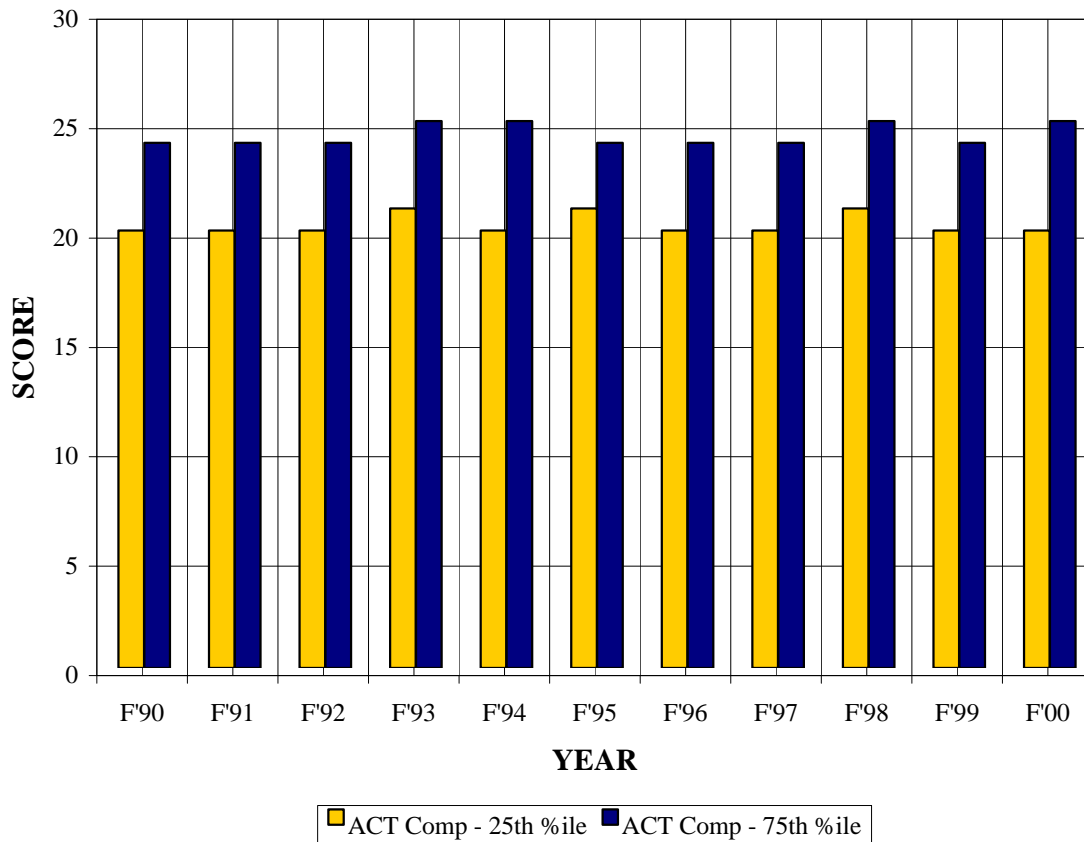
**AMERICAN COLLEGE TESTING PROGRAM SCORES
OF ENTERING FRESHMEN
FALL 1996-97 THROUGH 2000-01
SPELMAN COLLEGE**

COMPOSITE RANGES	1996-97	%	1997-98	%	1998-99	%	1999-00	%	1999-00	%
29-34	3	2	7	4	9	5	3	1	10	3
27-28	13	7	12	6	13	7	20	7	18	7
25-26	29	16	15	8	32	17	39	14	47	16
23-24	43	23	37	19	46	24	57	21	57	20
21-22	48	26	45	24	43	23	61	22	72	25
Below 21	51	27	75	39	46	25	93	34	87	30
Scores Reported (#)	<u>187</u>		<u>191</u>		<u>189</u>		<u>273</u>		<u>291</u>	
% of New Freshmen Enrollment	40%		38%		37%		47%		51%	
Mean Composite Score	22		22		23		22		22	
New Freshmen Enrolled (#)	472		508		507		576		576	

SOURCES: Offices of Admissions and Orientation Services and Institutional Research, Assessment and Planning

**ACT - 25th and 75th PERCENTILE SCORES
FALL 1990-91 THROUGH 2000-01
SPELMAN COLLEGE**

Category	F'90	F'91	F'92	F'93	F'94	F'95	F'96	F'97	F'98	F'99	F'00
ACT Comp - 25th %ile	20	20	20	21	20	21	20	20	21	20	20
ACT Comp - 75th %ile	24	24	24	25	25	24	24	24	25	24	25



SOURCE: Office of Institutional Research, Assessment and Planning

GEOGRAPHICAL DISTRIBUTION
 ENTERING FRESHMEN
 FALL 1996-97 THROUGH 2000-01
 SPELMAN COLLEGE

<u>State or Region</u>	<u>1996-97</u>	<u>1997-98</u>	<u>1998-99</u>	<u>1999-00</u>	<u>2000-01</u>
Alabama	11	14	23	15	14
Alaska	-	-	3	-	-
Arizona	1	3	3	3	1
Arkansas	2	5	8	5	7
California	45	32	30	47	36
Colorado	-	3	3	4	5
Connecticut	8	5	3	6	9
Delaware	1	2	2	1	1
District of Columbia	12	13	6	15	4
Florida	14	21	17	16	11
Georgia	81	92	114	144	132
Hawaii	-	1	-	-	-
Idaho	-	1	-	2	-
Illinois	18	18	29	25	22
Indiana	4	2	3	6	4
Iowa	3	-	1	-	-
Kansas	1	3	-	1	-
Kentucky	1	4	1	3	3
Louisiana	8	5	8	7	12
Maryland	23	33	21	24	20
Massachusetts	13	9	9	11	7
Michigan	13	11	15	14	22
Minnesota	4	6	1	2	7
Mississippi	10	8	6	8	9
Missouri	3	9	7	6	5
Nebraska	1	-	-	-	-
Nevada	-	4	3	1	-
New Hampshire	2	-	-	-	-
New Jersey	16	27	13	24	31
New Mexico	1	1	1	1	-
New York	34	36	34	36	51
North Carolina	10	8	9	12	9
Ohio	17	21	16	16	21
Oklahoma	-	1	4	5	6

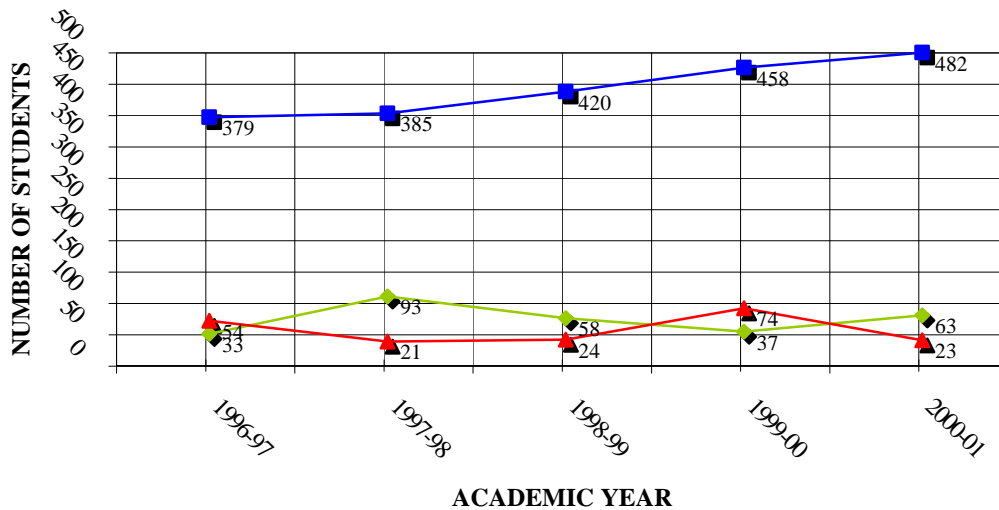
Geographical Distribution
 Entering Freshmen
 Fall 1996-97 through 2000-01
 Spelman College

<u>State or Region</u>	<u>1996-97</u>	<u>1997-98</u>	<u>1998-99</u>	<u>1999-00</u>	<u>2000-01</u>
Oregon	1	-	1	-	2
Pennsylvania	18	15	15	9	9
Rhode Island	1	-	-	2	-
South Carolina	10	20	23	6	18
South Dakota	-	-	-	-	1
Tennessee	12	10	21	20	12
Texas	29	26	28	46	32
U. S. Virgin Islands	-	2	3	-	-
Vermont	-	-	-	-	-
Virginia	16	19	7	19	32
Washington	5	9	2	3	4
West Virginia	1	-	-	1	1
Wisconsin	1	-	5	3	2
Foreign Residence (U.S. Citizen)	3	3	1	-	-
Foreign Countries	<u>18</u>	<u>6</u>	<u>8</u>	<u>7</u>	<u>13</u>
	-	-	-	-	-
TOTAL	<u>508</u>	<u>507</u>	<u>576</u>	<u>576</u>	<u>576</u>
Georgia Students:	81	92	117	124	132
Percent of Total	16%	18%	20%	22%	23%
Percent From Foreign Countries	4%	1%	1%	1%	2%

SOURCE: Offices of Admissions and Orientation Services and Institutional Research, Assessment
 and Planning

FIRST-TIME FRESHMEN BY AGE 1996-97 THROUGH 2000-01 SPELMAN COLLEGE

Age Breakdown	1996-97	1997-98	1998-99	1999-00	2000-01
17 or less	33	93	58	37	63
18	379	385	420	458	482
19	54	21	24	74	23
20	2	2	2	2	1
21	2	0	1	1	1
22	1	0	0	0	0
23	0	0	0	1	0
26+	0	0	0	2	2
Unknown	1	7	2	1	4
Total	472	508	507	576	576



Percentage Breakdown	1996-97	1997-98	1998-99	1999-00	2000-01
17 or less	7%	18%	11%	6%	11%
18	80%	76%	83%	80%	84%
19	11%	4%	5%	13%	4%
20+	1%	----	1%	1%	1%
Unknown	----	1%	----	----	1%

SOURCE: Office of Institutional Research, Assessment and Planning

ENROLLMENT STATISTICS

**ENROLLMENT BY CLASSIFICATION
FALL 1996-97 THROUGH 2000-01
SPELMAN COLLEGE**

Classification	1996-97		1997-98		1998-99		1999-00		2000-01	
	N	%	N	%	N	%	N	%	N	%
Freshmen										
New	472	25	508	26	507	27	576	28	576	27
Other	55	3	60	3	77	4	112	5	135	6
Sophomores	475	25	482	25	467	25	528	26	501	24
Juniors	487	26	483	25	423	22	482	23	504	24
Seniors	373	20	383	20	391	21	346	17	389	18
Unclassified	<u>37</u>	2	<u>21</u>	1	<u>32</u>	2	<u>21</u>	1	<u>22</u>	1
HEADCOUNT TOTAL	<u>1,899</u>		<u>1,937</u>		<u>1,897</u>		<u>2,065</u>		<u>2,127</u>	
Part-time (included in figures above)	97	5	80	4	55	3	57	3	60	3
F.T.E. TOTAL	<u>1,852</u>		<u>1,899</u>		<u>1,873</u>		<u>2,040</u>		<u>2,100</u>	

Note: Figures for classified students are based on cumulative semester hours earned as reflected in the student master file. The unclassified category contains exchange and cross registered students from other institutions desiring the Spelman "experience," and college graduates who returned to take courses, primarily for the purpose of teacher certification. Headcount percentage in each column is equal to 100.

SOURCE: Office of Institutional Research, Assessment and Planning

**GEOGRAPHICAL DISTRIBUTION
FALL 1996-97 THROUGH 2000-01
SPELMAN COLLEGE**

<u>State or Region</u>	<u>1996-97</u>	<u>1997-98</u>	<u>1998-99</u>	<u>1999-00</u>	<u>2000-01</u>
Alabama	42	49	60	61	60
Alaska	1	1	4	3	2
Arizona	15	11	8	10	8
Arkansas	16	13	16	19	20
California	168	164	155	156	132
Colorado	10	13	9	9	11
Connecticut	29	27	21	23	23
Delaware	8	7	5	6	7
District of Columbia	39	40	37	45	32
Florida	55	54	62	69	55
Georgia	411	414	428	492	583
Hawaii	-	1	-	-	-
Idaho	1	1	1	1	1
Illinois	52	69	80	96	90
Indiana	15	15	16	16	15
Iowa	8	5	5	3	3
Kansas	6	6	4	4	3
Kentucky	17	17	11	11	10
Louisiana	32	28	26	22	28
Maryland	100	102	103	97	90
Massachusetts	42	44	44	36	27
Michigan	55	48	46	52	56
Minnesota	6	11	10	11	16
Mississippi	31	32	31	29	30
Missouri	18	22	24	24	25
Nebraska	3	2	1	-	-
Nevada	6	7	9	7	5
New Hampshire	2	2	-	-	-
New Jersey	67	73	65	77	84
New Mexico	1	1	1	2	1
New York	131	139	129	128	140
North Carolina	45	41	33	43	40
Ohio	62	74	60	64	70
Oklahoma	9	8	6	10	15
Oregon	1	-	2	1	3

Geographical Distribution
 Fall 1996-97 through 2000-01
 Spelman College

<u>State or Region</u>	<u>1996-97</u>	<u>1997-98</u>	<u>1998-99</u>	<u>1999-00</u>	<u>2000-01</u>
Pennsylvania	51	56	53	50	45
Rhode Island	2	2	1	3	1
South Carolina	47	50	63	56	62
South Dakota	-	-	-	-	1
Tennessee	39	38	48	60	55
Texas	94	99	97	126	116
U. S. Virgin Islands	7	5	5	4	4
Vermont	1	1	-	-	-
Virginia	57	60	58	64	73
Washington	18	25	15	13	14
West Virginia	5	3	1	2	3
Wisconsin	8	6	7	8	10
Unspecified	-	3	-	-	-
Foreign Residence					
(U. S. Citizen)	<u>5</u>	5	6	7	4
Foreign Countries	<u>61</u>	<u>43</u>	<u>31</u>	<u>45</u>	<u>54</u>
TOTAL	<u>1,899</u>	<u>1,937</u>	<u>1,897</u>	<u>2,065</u>	<u>2,127</u>
Georgia Students:	411	414	428	492	583
Percent of Total	22%	21%	23%	24%	27%
# of States	45	45	43	42	43
(incl. D. C. & the V.I.)					
# of Foreign Countries	29	19	16	16	16

SOURCE: Office of Institutional Research, Assessment and Planning

**DISTRIBUTION BY MAJOR AND CLASSIFICATION
FALL 2000-01
SPELMAN COLLEGE**

Major	New Fresh	Other Fresh	Sophs	Juniors	Seniors	Unclass	Total	(%)*	PT**
Art	5	3	3	4	3	-	18	1%	1
Biochemistry	10	3	6	9	5	-	33	2%	-
Biology	126	19	68	64	42	-	319	15%	4
Chemistry	15	1	12	11	10	-	49	2%	2
Child Development	18	5	14	25	28	-	90	4%	6
Comp. Women's Studies	-	1	2	1	3	-	7	0%	-
Computer Science	38	10	29	18	16	-	111	5%	2
Dance	-	-	3	-	-	-	3	0%	-
Dual Degree (Engin.)	28	7	30	30	5	-	100	5%	3
Economics	24	7	42	48	45	-	166	8%	2
English	32	12	41	60	60	-	205	10%	3
Environmental Science	-	-	1	-	-	-	1	0%	-
French	-	1	3	-	1	-	5	0%	-
History	8	-	16	11	5	-	40	2%	-
Human Services	-	3	2	3	2	-	10	0%	7
Independent Major	-	-	-	1	-	-	1	0%	-
Mathematics	23	4	12	22	20	-	81	4%	-
Music	7	5	3	6	6	-	27	1%	-
Philosophy	1	-	3	3	2	-	9	0%	1
Physics	1	1	2	2	-	-	6	0%	-
Political Science	55	10	51	45	30	-	191	9%	3
Psychology	102	16	86	86	65	-	355	17%	8
Religion	-	1	3	-	2	-	6	0%	3
Sociology/Anthropology	6	4	12	17	18	-	57	3%	2
Spanish	4	-	6	6	11	-	27	1%	2
Theater & Drama	14	3	4	4	8	-	33	2%	-
Exchange Students***	-	-	-	-	-	22	22	1%	-
Undeclared	59	19	47	28	2	-	155	8%	11
Total	576	135	501	504	389	22	2,127	100%	60
% of Total Enrollment	27%	6%	24%	24%	18%	1%	100%		3%

*Percent of total student population

**Included in figures to the left

***Students temporarily from other institutions

****Spelman College graduates taking additional courses (most times for the purpose of teacher certification)

SOURCE: Offices of the Registrar and Institutional Research, Assessment & Planning

**ENROLLMENT SUMMARY BY MAJOR
FALL 1996-97 THROUGH 2000-01
SPELMAN COLLEGE**

Field	1996-97		1997-98		1998-99		1999-00		2000-01	
	N	%	N	%	N	%	N	%	N	%
Art	26	1	30	2	20	1	23	1	18	1
Biochemistry	28	1	24	1	35	2	30	1	33	1
Biology*	273	15	290	15	334	18	320	15	319	15
Chemistry	69	4	59	3	51	3	54	3	49	3
Child Devel/Education	76	4	80	4	68	4	86	4	90	4
Comparative Women's Studies	-	-	4	-	-	-	7	-	7	-
Computer Science	64	3	61	3	78	4	90	4	111	4
Theater/Drama & Dance	25	1	32	2	30	2	39	2	36	2
Dual Degree (Engin.)	108	6	119	6	126	5	119	6	100	6
Economics	143	8	145	7	121	6	148	7	166	7
English	196	10	209	11	202	11	226	11	205	11
Environmental Science	-	-	-	-	-	-	-	-	1	-
French	4	-	12	1	9	-	7	-	5	-
History	44	2	43	2	29	2	32	2	40	2
Human Services	25	1	21	1	12	1	9	-	10	-
Independent Major	-	-	-	-	-	-	1	-	1	-
International Relations	-	-	-	-	-	-	-	-	-	-
Mathematics	68	4	74	4	68	4	88	4	81	4
Multi-Int. Studies	-	-	-	-	-	-	-	-	-	-
Music	28	1	37	2	31	2	33	2	27	2
Natural Sciences	4	-	-	-	1	-	2	-	-	-
Philosophy	7	-	15	1	5	-	10	-	9	-
Physics	4	-	6	-	5	-	7	-	6	-
Political Science	139	7	133	7	125	7	166	8	191	8
Psychology	310	17	310	16	284	15	304	15	355	15
Religion	6	-	5	-	4	-	4	-	6	-
Sociology/Anthropology	70	4	78	4	54	3	65	3	57	3
Spanish	31	2	29	2	19	1	21	1	27	1
Exchange	30	2	8	-	29	-	16	1	22	1
Graduates**	2	-	1	-	-	-	1	-	-	-
Unspecified/Undecided	114	6	100	5	154	8	156	8	155	8
Staff	5	-	12	1	-	-	-	-	-	-
Visitors	-	-	-	-	3	1	1	-	-	-
TOTAL	<u>1,899</u>		<u>1,937</u>		<u>1,897</u>		<u>2,065</u>		<u>2,127</u>	

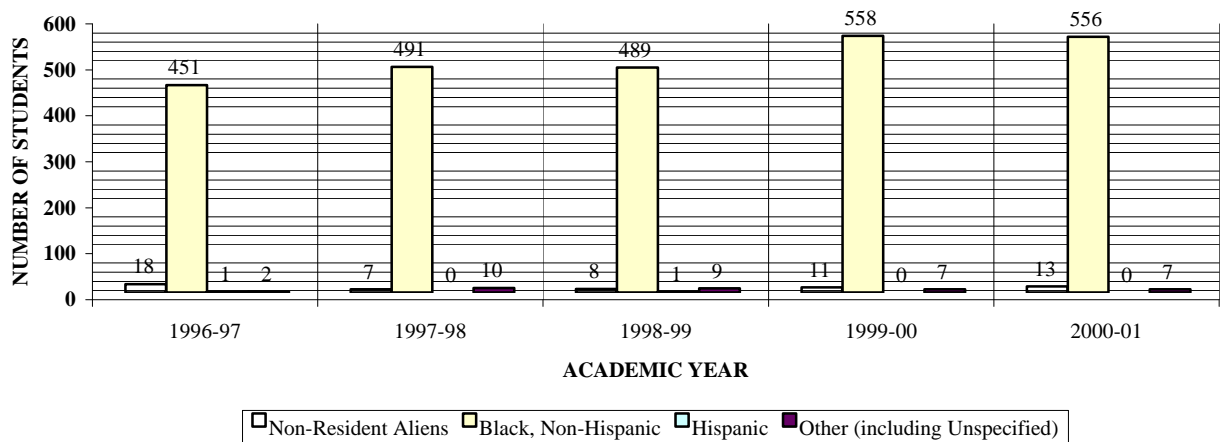
*Includes Pre-Med Majors

**Most times enrolled for the purpose of teacher certification

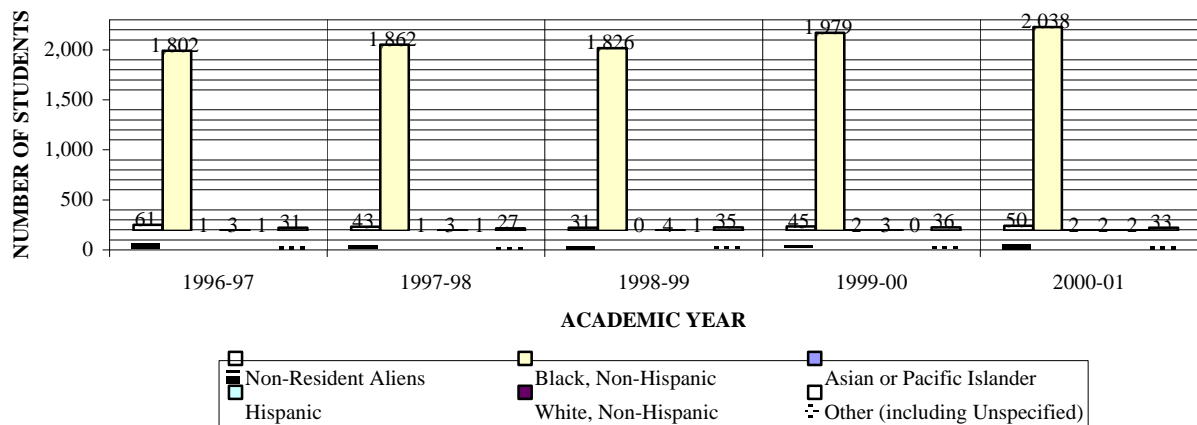
SOURCE: Office of Institutional Research, Assessment and Planning

ENROLLMENT BY ETHNICITY Fall 1996-97 THROUGH 2000-01 SPELMAN COLLEGE

Entering First Time Freshmen	1996-97	1997-98	1998-99	1999-00	2000-01
Non-Resident Aliens	18	7	8	11	13
Black, Non-Hispanic	451	491	489	558	556
Hispanic	1	0	1	0	0
Other (including Unspecified)	2	10	9	7	7
	472	508	507	576	576



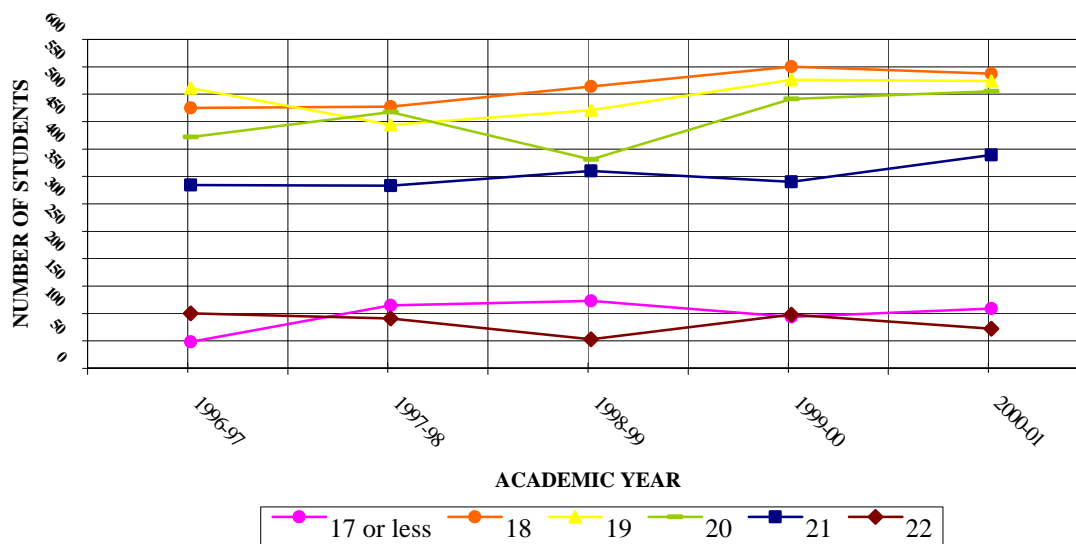
All Students	1996-97	1997-98	1998-99	1999-00	2000-01
Non-Resident Aliens	61	43	31	45	50
Black, Non-Hispanic	1,802	1,862	1,826	1,979	2,038
Asian or Pacific Islander	1	1	0	2	2
Hispanic	3	3	4	3	2
White, Non-Hispanic	1	1	1	0	2
Other (including Unspecified)	31	27	35	36	33
	1,899	1,937	1,897	2,065	2,127



SOURCE: Office of Institutional Research, Assessment and Planning

ENROLLMENT BY AGE 1996-97 THROUGH 2000-01 SPELMAN COLLEGE

Age Breakdown	1996-97	1997-98	1998-99	1999-00	2000-01
17 or less	29	96	104	75	90
18	456	458	495	531	518
19	492	425	452	507	505
20	403	448	362	472	486
21	315	314	341	321	370
22	81	72	34	79	53
23	24	29	12	15	20
24	4	8	11	12	10
25	8	5	1	9	6
26+	80	70	35	42	60
Unknown	7	12	50	2	9
	1,899	1,937	1,897	2,065	2,127



Percentage Breakdown	1996-97	1997-98	1998-99	1999-00	2000-01
17 or less	2%	5%	5%	4%	4%
18	24%	24%	26%	26%	24%
19	26%	22%	24%	25%	24%
20	21%	23%	19%	23%	23%
21	17%	16%	18%	16%	17%
22	4%	4%	2%	4%	3%
23	1%	1%	1%	1%	1%
24	---	---	1%	1%	---
25	---	---	---	---	---
26+	4%	4%	2%	2%	3%
Unknown	---	1%	3%	---	---

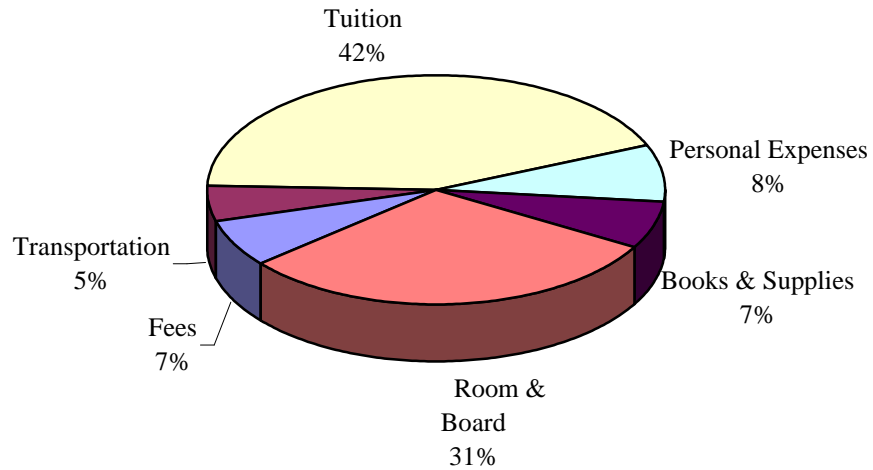
SOURCE: Office of Institutional Research, Assessment and Planning

**CAMPUS HOUSING STATISTICS
FALL 1996-97 THROUGH 2000-01
SPELMAN COLLEGE**

<u>Year</u>	<u>Housing Capacity</u>	<u>Number of Students Housed</u>	<u>Enrollment</u>	<u>Percent Housed</u>
1996-97	1,169	1,169	1,899	62%
1997-98	1,174	1,174	1,937	61%
1998-99	1,165	1,164	1,897	61%
1999-00	1,167	1,167	2,065	57%
2000-01	1,167	1,167	2,127	55%

SOURCE: Office of Residential Life

COSTS TO ATTEND SPELMAN COLLEGE 2000-01



Tuition	\$9,660
Room & Board	6,880
Personal Expenses	1,783 *
Fees	1,475 **
Transportation	1,144 *
Books & Supplies	1,490 *
	<hr/>
	<u>\$22,432</u>

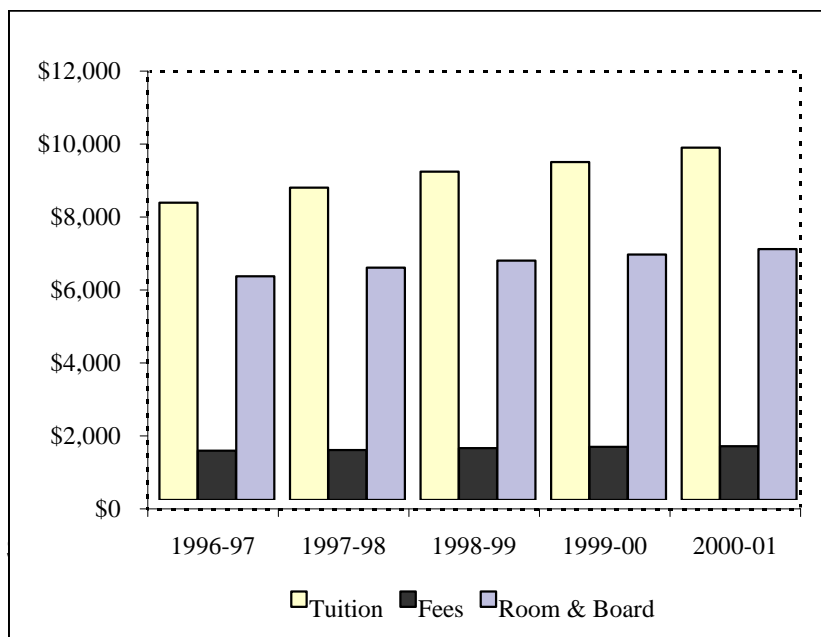
*Estimated

**Includes mandatory medical insurance fee

SOURCE: Offices of Financial Services and Institutional Research, Assessment & Planning

**TUITION, FEES, ROOM, AND BOARD
1996-97 THROUGH 2000-01
SPELMAN COLLEGE**

<u>Year</u>	<u>Tuition</u>	<u>Change</u>	<u>Fees*</u>	<u>Change</u>	<u>Room & Board</u>	<u>Change</u>	<u>Total</u>	<u>Change</u>
1996-97	\$8,150	8%	\$1,350	0%	\$6,130	4%	\$15,630	6%
1997-98	\$8,560	5%	\$1,365	1%	\$6,370	4%	\$16,295	4%
1998-99	\$9,000	5%	\$1,425	4%	\$6,560	3%	\$16,985	4%
1999-00	\$9,260	3%	\$1,455	2%	\$6,730	3%	\$17,445	3%
2000-01	\$9,660	4%	\$1,475	1%	\$6,880	2%	\$18,015	3%

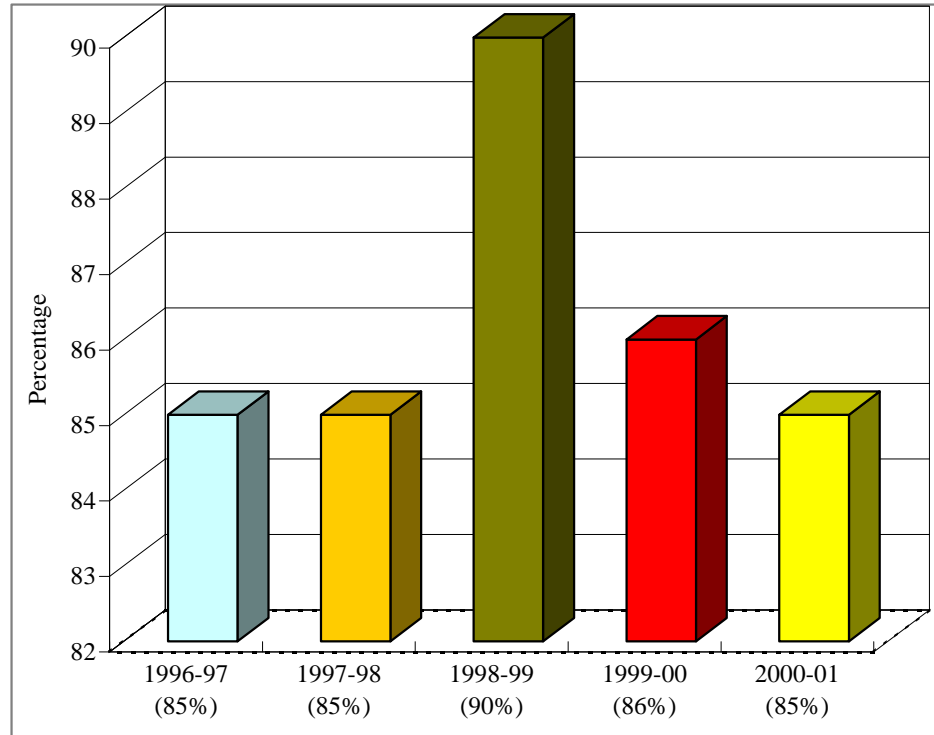


Change--1996-97 to 2000-01:	Tuition	19%
	Fees*	9%
	Room & Board	12%
	Overall	<u>15%</u>

Note: Change represents the percentage difference from the previous year.

SOURCE: Office of Institutional Research, Assessment & Planning

**FINANCIAL AID RECIPIENTS
1996-97 THROUGH 2000-01
SPELMAN COLLEGE**



Source: Office of Business & Financial Affairs (Financial Aid)

RETENTION AND GRADUATION

**RETENTION AND GRADUATION STATISTICS
FALL 1993-94 THROUGH 2000-01
SPELMAN COLLEGE**

COHORTS	1993-94	1994-95	1995-96	1996-97	1997-98	1998-99	1999-00	2000-01	Mean F '93-00
First-time Freshmen	443	448	481	472	508	507	576	576	501
<u>RETURNEES - Headcounts</u>									
--2nd year	401	401	434	417	459	462	510	----	441
--3rd year	376	386	411	345	439	421	----	----	396
--4th year	336	360	357	359	397	----	----	----	362
--5th year	43	27	47	38	----	----	----	----	39
--6th year	9	8	9	----	----	----	----	----	9
<u>GRADUATES - Headcounts (through May of the appropriate academic year)*</u>									
--4 years or less	263	302	314	298	----	----	----	----	294
--5 years or less	320	351	353	----	----	----	----	----	341
--6 years or less	330	357	----	----	----	----	----	----	344

<u>RETURNEES (Percentages)</u>									
--2nd year	91%	90%	90%	88%	90%	91%	89%	----	90%
--3rd year	85%	86%	85%	73%	86%	83%	----	----	83%
--4th year	76%	80%	74%	76%	78%	----	----	----	77%
--5th year	10%	6%	10%	8%	----	----	----	----	9%
--6th year	2%	2%	2%	----	----	----	----	----	2%
<u>GRADUATES - Percentages (through May of the appropriate academic year)*</u>									
--4 years or less	59%	67%	65%	63%	----	----	----	----	64%
--5 years or less	72%	78%	73%	----	----	----	----	----	74%
--6 years or less	75%	80%	----	----	----	----	----	----	78%

NOTE: The above statistics are based on the actions of students in the first-time college freshman cohorts. Percentages were derived by comparing the number of returnees and graduates to the respective number of new freshmen in the cohort. Spelman students on domestic or foreign exchange were not included in the figures on "returnees" during the period in which they were away. They were added upon return to Spelman.

*Percentages are cumulative and are rounded to the nearest whole number.

SOURCE: Office of Institutional Research, Assessment, & Planning

**GRADUATES BY DEGREE AND MAJOR
MAY, 1996-00
SPELMAN COLLEGE**

Bachelor of Arts	1996		1997		1998		1999		2000		Total	
		%		%		%		%		%	(Mean)	%
Art	6	1%	5	1%	9	2%	7	2%	9	2%	7.2	2%
Child Development	22	5%	16	4%	21	5%	28	7%	17	4%	20.8	5%
Comparative Women's Studies	0	0%	0	0%	0	0%	2	0%	4	1%	1.2	0%
Drama	5	1%	4	1%	9	2%	4	1%	12	3%	6.8	2%
Economics	41	9%	39	10%	40	9%	44	10%	27	7%	38.2	9%
English	64	14%	43	11%	49	11%	61	14%	66	17%	56.6	13%
French	4	1%	3	1%	2	0%	4	1%	5	1%	3.6	1%
History	11	2%	9	2%	19	4%	12	3%	7	2%	11.6	3%
Human Services	5	1%	5	1%	3	1%	6	1%	1	0%	4	1%
Independent Major	1	0%	1	0%	0	0%	0	0%	1	0%	0.6	0%
Mathematics*	1	0%	6	1%	3	1%	0	0%	1	0%	2.2	1%
Music	2	0%	2	0%	3	1%	3	1%	9	2%	3.8	1%
Philosophy	6	1%	1	0%	6	1%	2	0%	4	1%	3.8	1%
Political Science	50	11%	33	8%	35	8%	28	7%	30	8%	35.2	8%
Psychology	85	18%	87	22%	82	19%	82	19%	58	15%	78.8	19%
Religion	2	0%	2	0%	3	1%	1	0%	2	1%	2	0%
Sociology/Anthropology	26	6%	15	4%	29	7%	25	6%	16	4%	22.2	5%
Spanish	7	1%	10	2%	9	2%	10	2%	9	2%	9	2%
Subtotal & % of Total Graduates	338	72%	281	70%	322	73%	319	76%	278	72%	307.6	73%
<hr/>												
Bachelor of Science												
Biochemistry	5	1%	3	1%	2	0%	0	0%	2	1%	2.4	1%
Biology	41	9%	46	11%	41	9%	48	11%	48	13%	44.8	11%
Chemistry	19	4%	23	6%	15	3%	9	2%	9	2%	15	4%
Computer & Information Sciences	16	3%	9	2%	12	3%	9	2%	8	2%	10.8	3%
Dual Degree**	14	3%	23	6%	25	6%	20	5%	16	4%	19.6	5%
Mathematics*	16	3%	13	3%	19	4%	13	3%	23	6%	16.8	4%
Natural Sciences	14	3%	3	1%	1	0%	1	0%	0	0%	3.8	1%

*Mathematics majors have the option of receiving either the B.A. or B.S. degree.

**Students who received a degree as a result of having completed three years of work at Spelman and two years at an approved school of engineering.

Graduates by Degree and Major
 May, 1996-00
 Spelman College

Bachelor of Science (cont'd)	1996		1997		1998		1999		2000		Total	
		%		%		%		%		%	(Mean)	%
Physics	7	1%	1	0%	2	0%	3	1%	0	0%	2.6	1%
Subtotal & % of Total												
Graduates	132	28%	121	30%	117	27%	103	24%	106	28%	115.8	27%
TOTAL	<u>470</u>		<u>402</u>		<u>439</u>		<u>422</u>		<u>384</u>		<u>423.4</u>	100%

SOURCE: Office of Institutional Research, Assessment and Planning

STATISTICS ON FACULTY

**STATISTICS ON FACULTY
2000-01**

**FULL-TIME FACULTY BY DEPARTMENT AND RANK
FALL 2000-01
SPELMAN COLLEGE
N = 145**

<u>Department/Program</u>	<u>Professor</u>	<u>Associate Professor</u>	<u>Assistant Professor</u>	<u>Instructor</u>	<u>Lecturer</u>	<u>Total</u>
Art	1	4	1	-	-	6
Biology	2	5	2	-	2 *	11
Chemistry	2	5	1	-	3 *	11
Computer & Information Science	-	1	1	-	3	5
Drama & Dance	-	2	3	-	2	7
Dual Degree Engineering	-	-	-	-	1	1
Economics	-	6	-	-	-	6
Education	-	5	4	-	3	12
English	2	7	6	2	2	19
Foreign Languages	1	6	3	3	-	13
History	1	2	2	1	-	6
Mathematics	5	4	1	-	1	11
Music	1	1	2	-	2	6
Philosophy & Religion	2	-	2	-	2	6
Physics	-	3	2	-	-	5
Political Science	-	5	1	-	-	6
Psychology	2	4	2	-	-	8
Sociology	3	2	1	-	-	6
TOTAL	<u>22</u>	<u>62</u>	<u>34</u>	<u>6</u>	<u>21</u>	<u>145</u>

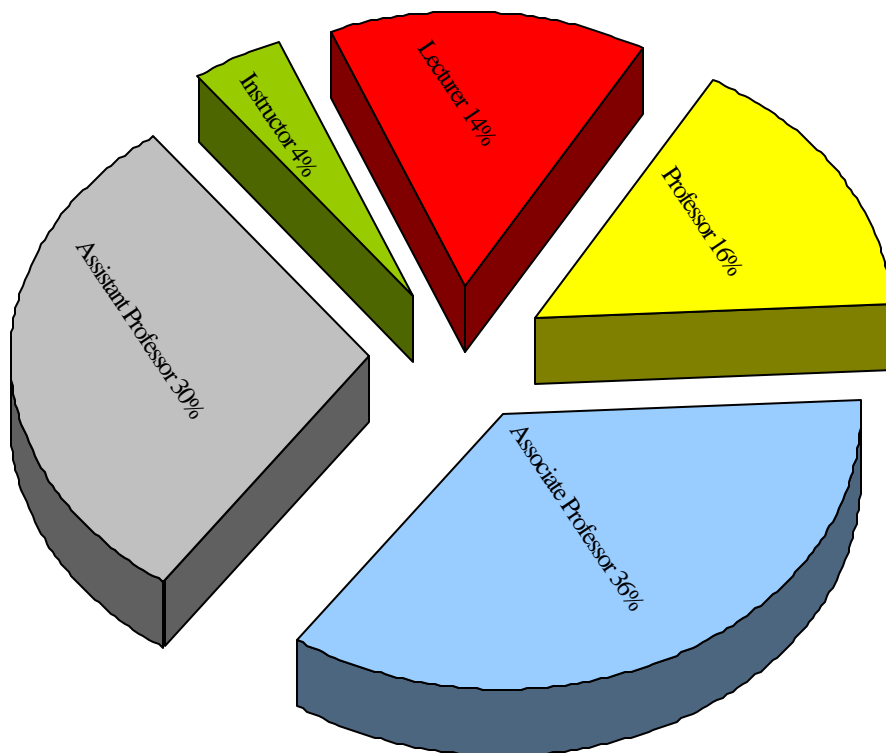
Percent of N (145)	15%	42%	23%	4%	14%	100%
--------------------	-----	-----	-----	----	-----	------

*Includes one Teacher Scholar

NOTE: Figures include faculty on-leave but do not include administrators without tenure or those who are not on tenure track who may or may not teach during a specified semester.

SOURCE: Office of Institutional Research, Assessment & Planning

**FULL-TIME FACULTY BY RANK
FALL 2000-01
SPELMAN COLLEGE**



Data on previous page

FULL-TIME FACULTY BY DEPARTMENT, RANK AND GENDER
FALL 2000-01
SPELMAN COLLEGE
N = 145

Department/ Program	Professor		Associate Professor		Assistant Professor		Instructor		Lecturer		Total	
	Male	Female	Male	Female	Male	Female	Male	Female	Male	Female	Male	Female
Art	1	-	2	2	-	1	-	-	-	-	3	3
Biology	-	2	3	2	1	1	-	-	-	2 *	4	7
Chemistry	1	1	1	4	-	1	-	-	1	2 *	3	8
Computer & Informa- tion Science	-	-	-	1	-	-	-	1	2	1	2	3
Drama/Dance	-	-	-	2	2	1	-	-	1	1	3	4
Dual Degree Engineering	-	-	-	-	-	-	-	-	1	-	1	0
Economics	-	-	2	4	-	-	-	-	-	-	2	4
Education	-	-	1	4	-	4	-	-	1	2	2	10
English	-	2	-	7	2	4	1	1	1	1	4	15
Foreign Languages	1	-	4	2	1	2	-	3	-	-	6	7
History	-	1	1	1	1	1	-	1	-	-	2	4
Mathematics	1	4	3	1	-	1	-	-	-	1 *	4	7
Music	-	1	1	-	1	1	-	-	1	1	3	3
Philosophy & Religion	2	-	-	-	1	1	-	-	1	1	4	2
Physics	-	-	3	-	1	1	-	-	-	-	4	1
Political Science	-	-	1	4	-	1	-	-	-	-	1	5
Psychology	1	1	-	4	-	2	-	-	-	-	1	7
Sociology	2	1	1	1	-	1	-	-	-	-	3	3
TOTAL	9	13	23	39	10	23	1	6	9	12	52	93

Percent of N (145) 6% 9% 16% 27% 7% 16% 1% 4% 6% 8% 36% 64%

*Includes one Teacher Scholar

SOURCE: Office of Institutional Research, Assessment & Planning

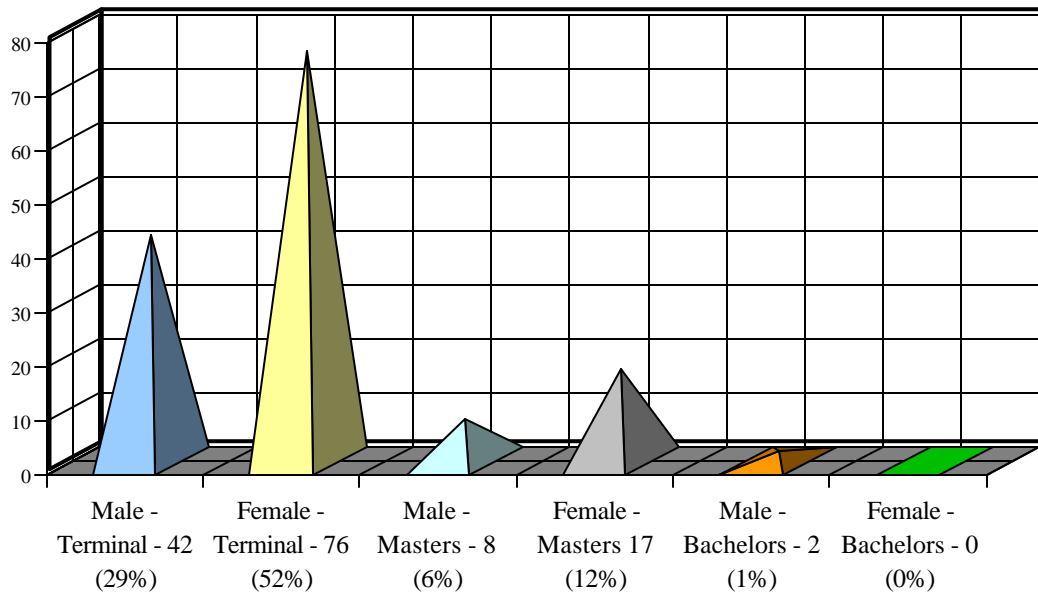
**DISTRIBUTION OF FULL-TIME FACULTY BY
DEPARTMENT AND HIGHEST DEGREE EARNED
FALL 2000-01
SPELMAN COLLEGE
N = 145**

<u>Department/Program</u>	Doctorate or Equivalent		Masters		Bachelors	
	<u>Male</u>	<u>Female</u>	<u>Male</u>	<u>Female</u>	<u>Male</u>	<u>Female</u>
Art	3	3	-	-	-	-
Biology	4	7	-	-	-	-
Chemistry	2	8	1	-	-	-
Computer & Information Science	-	1	1	2	1	-
Drama & Dance	2	3	-	1	1	-
Dual Degree Engineering	-	-	1	-	-	-
Economics	2	4	-	-	-	-
Education	1	6	1	4	-	-
English	3	12	1	3	-	-
Foreign Languages	5	4	1	3	-	-
History	2	3	-	1	-	-
Mathematics	4	6	-	1	-	-
Music	2	2	1	1	-	-
Philosophy & Religion	3	1	1	1	-	-
Physics	4	1	-	-	-	-
Political Science	1	5	-	-	-	-
Psychology	1	7	-	-	-	-
Sociology	3	3	-	-	-	-
TOTAL	<u>42</u>	<u>76</u>	<u>8</u>	<u>17</u>	<u>2</u>	<u>0</u>
Percent of N (145)	29%	52%	6%	12%	1%	0%

NOTE: M.F.A. is considered the equivalent of a terminal degree

SOURCE: Office of Institutional Research, Assessment & Planning

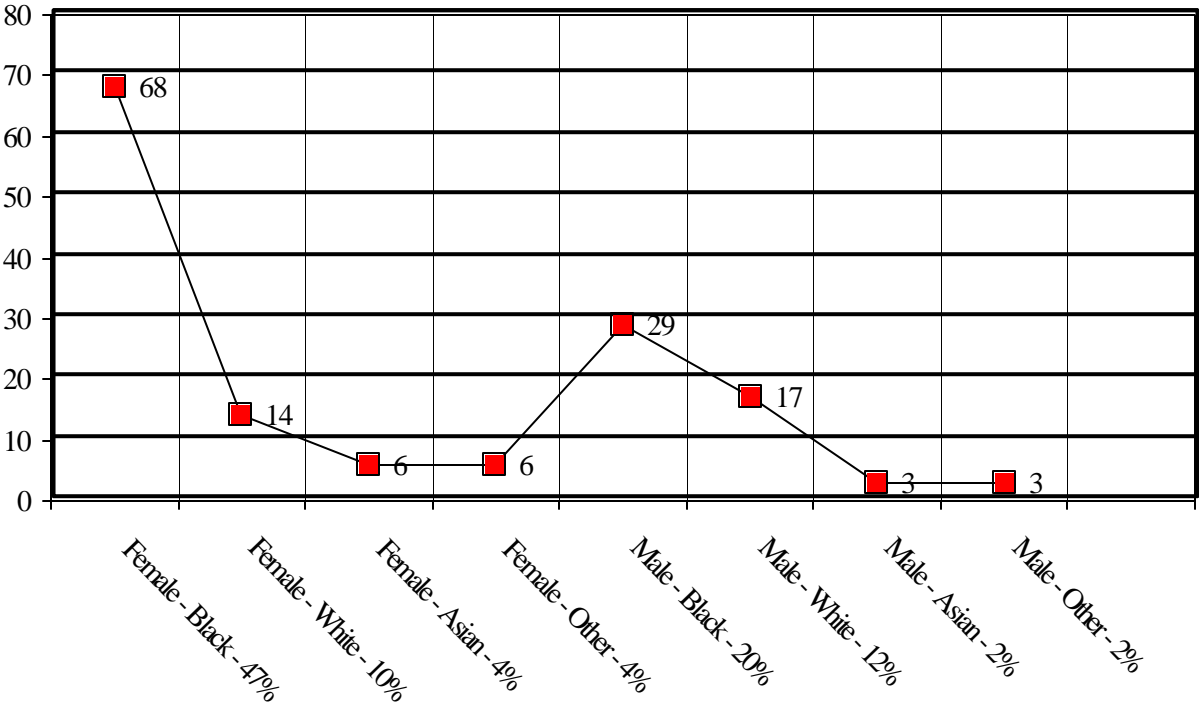
**FULL-TIME FACULTY
BY GENDER AND HIGHEST DEGREE
FALL 2000-01
SPELMAN COLLEGE**



NOTE: M.F.A. is considered the equivalent of a terminal degree

SOURCE: Office of Institutional Research, Assessment & Planning

**FULL-TIME FACULTY BY GENDER AND ETHNICITY
FALL 2000-01
SPELMAN COLLEGE**



<u>Race</u>	<u>Male</u>	<u>Female</u>
Asian	3	6
Black	29	68
White	17	14
Other	3	5
Total	<u>52 (36%)</u>	<u>93 (64%)</u>

SOURCE: Office of Institutional Research, Assessment and Planning

TENURE STATUS OF FULL-TIME FACULTY
Fall 2000-01
SPELMAN COLLEGE
N = 145

Department/ Program	Tenured Faculty			Tenure Track Faculty			Non-Tenure Track Faculty		
	Male	Female	Total	Male	Female	Total	Male	Female	Total
Art	3	2	5	-	-	0	-	1	1
Biology	3	4	7	1	-	1	-	3	3
Chemistry	2	4	6	-	-	0	1	4	5
Computer & Informa- tion Science	-	1	1	-	-	0	2	2	4
Drama & Dance	-	1	1	1	1	2	2	2	4
Dual Degree									
Engineering	-	-	0	-	-	0	1	-	1
Economics	2	4	6	-	-	0	-	-	0
Education	-	3	3	1	5	6	1	2	3
English	-	9	9	2	2	4	2	4	6
Foreign Languages	5	2	7	-	1	1	1	4	5
History	1	2	3	-	-	0	1	2	3
Mathematics	3	5	8	-	1	1	1	1	2
Music	1	1	2	1	1	2	1	1	2
Philosophy & Religion	2	-	2	-	-	0	2	2	4
Physics	3	-	3	-	-	0	1	1	2
Political Science	-	4	4	-	1	1	1	-	1
Psychology	1	5	6	-	1	1	-	1	1
Sociology	3	2	5	-	-	-	-	1	1
TOTAL	<u>29</u>	<u>49</u>	<u>78</u>	<u>6</u>	<u>13</u>	<u>19</u>	<u>17</u>	<u>31</u>	<u>48</u>
Percent of N (145)	20%	34%	54%	4%	9%	13%	12%	21%	33%

SOURCE: Office of Institutional Research, Assessment & Planning

**DISTRIBUTION OF TENURED FULL-TIME FACULTY
BY DEPARTMENT AND RANK
FALL 2000-01
SPELMAN COLLEGE
N = 78 (or 54% of Total)**

Department or Program	Professor		Associate Professor		Assistant Professor		Total		Total Tenured Faculty	Percent of Total Tenured Faculty (Rounded)
	Male	Female	Male	Female	Male	Female	Male	Female		
Art	1	-	2	2	-	-	3	2	5	6%
Biology	-	2	3	2	-	-	3	4	7	9%
Chemistry	1	1	1	3	-	-	2	4	6	8%
Computer & Information Sciences	-	-	-	1	-	-	-	1	1	1%
Drama & Dance	-	-	-	1	-	-	-	1	1	1%
Economics	-	-	2	4	-	-	2	4	6	8%
Education	-	-	-	3	-	-	-	3	3	4%
English	-	2	-	6	-	1	-	9	9	12%
Foreign Languages	1	-	4	2	-	-	5	2	7	9%
History	-	1	1	1	-	-	1	2	3	4%
Mathematics	-	4	3	1	-	-	3	5	8	10%
Music	-	1	1	-	-	-	-	1	1	1%
Philosophy & Religion	2	-	-	-	-	-	2	-	2	3%
Physics	-	-	3	-	-	-	3	-	3	4%
Political Science	-	-	-	4	-	-	-	4	4	5%
Psychology	1	1	-	4	-	-	1	5	6	8%
Sociology	2	1	1	1	-	-	3	2	5	6%
TOTAL	8	13	21	35	-	1	29	49	78	100%
% of Tenured Faculty (N = 65)	10%	17%	27%	45%	-	1%	37%	63%	100%	
% of Total Faculty (N = 145)	6%	9%	14%	24%	-	1%	20%	34%	54%	

SOURCE: Office of Institutional Research, Assessment & Planning

**SUMMARY STATISTICS ON TENURE
2000-01 ACADEMIC YEAR
SPELMAN COLLEGE**

Department	Full-time Faculty with Tenure	Total Faculty	Percent Tenured in Department	Tenured as a % of Total Faculty (145)	Tenured as a % of Total Tenured Faculty (78)	Non-Tenured Faculty (55%)
Art	5	6	83%	3%	6%	1
Biology	7	11	64%	5%	9%	4
Chemistry	6	11	55%	4%	8%	5
Computer & Information Sciences	1	5	20%	1%	1%	4
Drama & Dance	1	7	14%	1%	1%	6
Dual Degree Engineering	-	1	0%	0%	0%	1
Economics	6	6	100%	4%	8%	0
Education	3	12	25%	2%	4%	9
English	9	19	47%	6%	12%	10
Foreign Languages	7	13	54%	5%	9%	6
History	3	6	50%	2%	4%	3
Mathematics	8	11	73%	6%	10%	3
Music	2	6	33%	1%	3%	4
Philosophy & Religion	2	6	33%	1%	3%	4
Physics	3	5	60%	2%	4%	2
Political Science	4	6	67%	3%	5%	2
Psychology	6	8	75%	4%	8%	2
Sociology	5	6	83%	3%	6%	1
Total	78	145	-----	54%	100%	67

Source: Office of Institutional Research, Assessment and Planning

PART-TIME INSTRUCTIONAL FACULTY DISTRIBUTION
FALL 2000-01
SPELMAN COLLEGE
N = 50

<u>Department</u>	<u>Number of Faculty</u>	<u>% of Total Part-time Faculty</u>
<u>Chemistry</u>	4	8%
<u>Computer Science</u>	4	8%
<u>Drama & Dance</u>	3	6%
<u>Economics</u>	1	2%
<u>Education</u>	5	10%
<u>English</u>	1	2%
<u>Foreign Languages</u>	7	14%
<u>History</u>	1	2%
<u>Interdisciplinary Studies</u>	3	6%
<u>Mathematics</u>	6	12%
<u>Music</u>	7	14%
<u>Philosophy & Religion</u>	3	6%
<u>Physics</u>	2	4%
<u>Political Science</u>	1	2%
<u>Psychology</u>	2	4%

Sources: Offices of the Provost and Institutional Research, Assessment and Planning

**LONGITUDINAL STATISTICS
ON FACULTY**

**LONGITUDINAL STATISTICS ON FACULTY
FALL 1995-96 THROUGH 2000-01
SPELMAN COLLEGE**

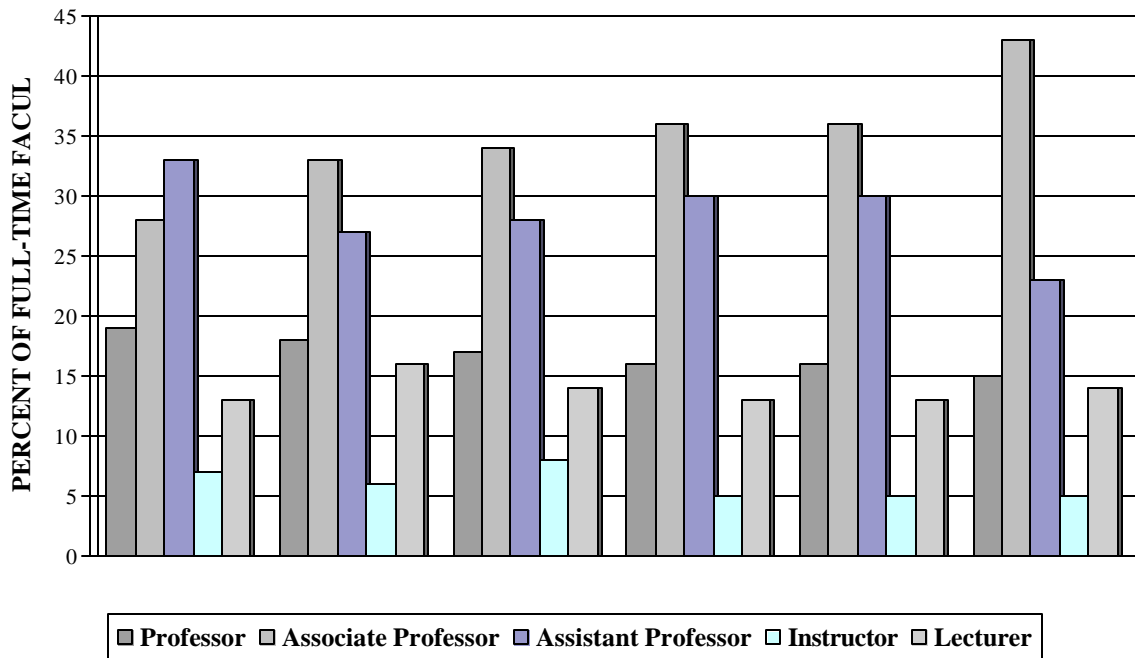
	<u>1995-96</u>	<u>1996-97</u>	<u>1997-98</u>	<u>1998-99</u>	<u>1999-00</u>	<u>2000-01</u>
Faculty: Full-time	134 (69%)	138 (68%)	145 (73%)	147 (72%)	145 (74%)	145 (74%)
Part-time	59 (31%)	65 (32%)	55 (27%)	58 (28%)	52 (26%)	50 (26%)
Total	193	203	200	205	197	195
Rank (FT)						
Professor	25 (19%)	25 (18%)	24 (17%)	23 (16%)	22 (15%)	22 (15%)
Associate Professor	38 (28%)	46 (33%)	49 (34%)	53 (36%)	52 (36%)	62 (43%)
Assistant Professor	44 (33%)	37 (27%)	40 (28%)	44 (30%)	44 (30%)	33 (23%)
Instructor	10 (7%)	8 (6%)	11 (8%)	8 (5%)	6 (4%)	7 (5%)
Lecturer	17 (13%)	22 (16%)	21 (14%)	20 (14%)	21 (15%)	21 (14%)
Gender (FT)						
Male	49 (37%)	52 (38%)	51 (35%)	54 (37%)	52 (36%)	52 (36%)
Female	85 (63%)	86 (62%)	94 (65%)	93 (63%)	93 (64%)	93 (64%)
Degrees (FT)						
Doctorate (or Equivalent)	110 (82%)	114 (83%)	120 (83%)	126 (86%)	120 (83%)	118 (81%)
Masters	22 (17%)	21 (15%)	22 (15%)	15 (10%)	20 (14%)	25 (18%)
Bachelor's	2 (1%)	3 (2%)	3 (2%)	4 (2%)	5 (3%)	2 (1%)
Tenure Status (FT)*						
Tenured	61 (46%)	69 (50%)	71 (48%)	72 (49%)	65 (45%)	78 (54%)
Tenure-Track	44 (33%)	35 (25%)	37 (26%)	31 (21%)	32 (22%)	19 (13%)
Non-Tenure-Track	29 (22%)	34 (25%)	37 (26%)	44 (30%)	48 (33%)	48 (33%)

*1995-96 figures on tenure are different from those published in the 1995-96 FACT BOOK because the writer inadvertently failed to change the status of persons who received tenure in 1995-96 from tenure-track to tenured.

NOTE: Percentages for rank, gender, degrees and tenure status are based on the total number of full-time faculty in each of the indicated years.

SOURCE: Office of Institutional Research, Assessment and Planning

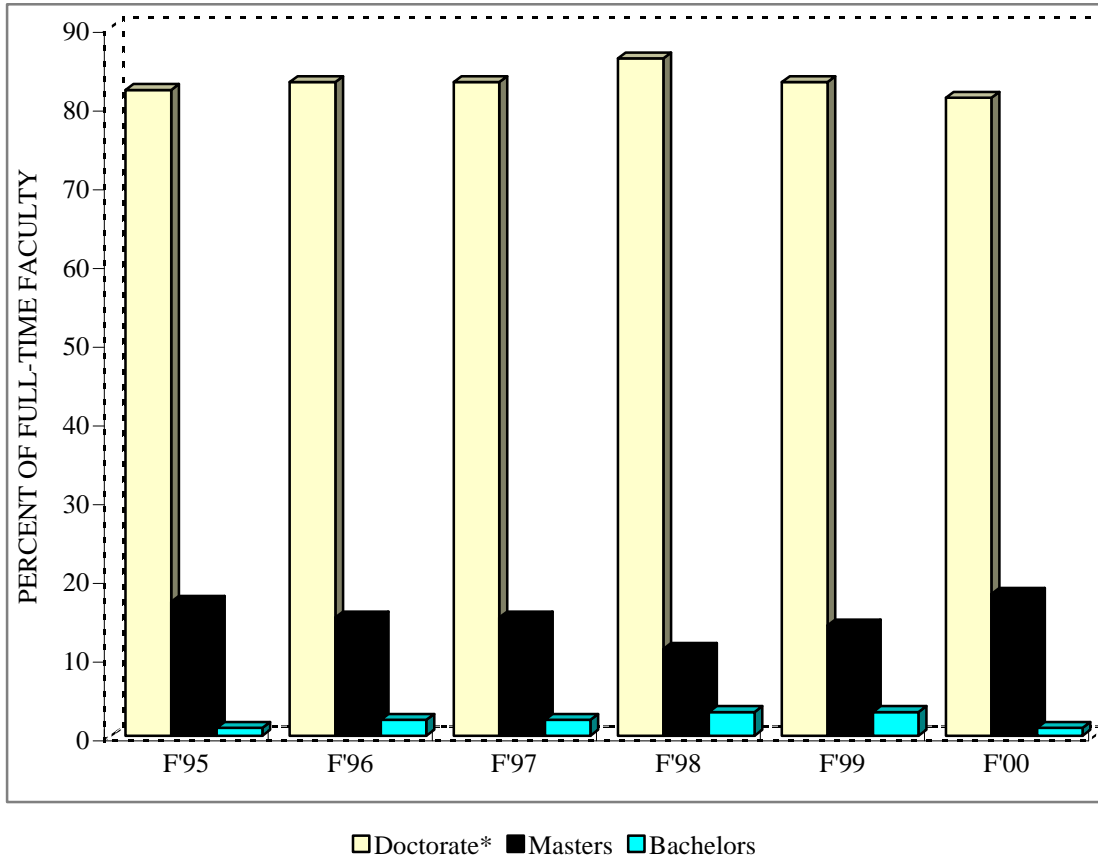
**FULL-TIME FACULTY BY RANK
1995-96 THROUGH 2000-01
SPELMAN COLLEGE**



<u>Rank</u>	<u>1995-96</u>	<u>1996-97</u>	<u>1997-98</u>	<u>1998-99</u>	<u>1999-00</u>	<u>2000-01</u>
Professor	19%	18%	17%	16%	15%	15%
Associate Professor	28	33	34	36	36	43
Assistant Professor	33	27	28	30	30	23
Instructor	7	6	8	5	4	5
Lecturer	13	16	14	13	15	14

SOURCE: Office of Institutional Research, Assessment and Planning

**FULL-TIME FACULTY BY DEGREE
FALL 1995-96 THROUGH FALL 2000-01
SPELMAN COLLEGE**

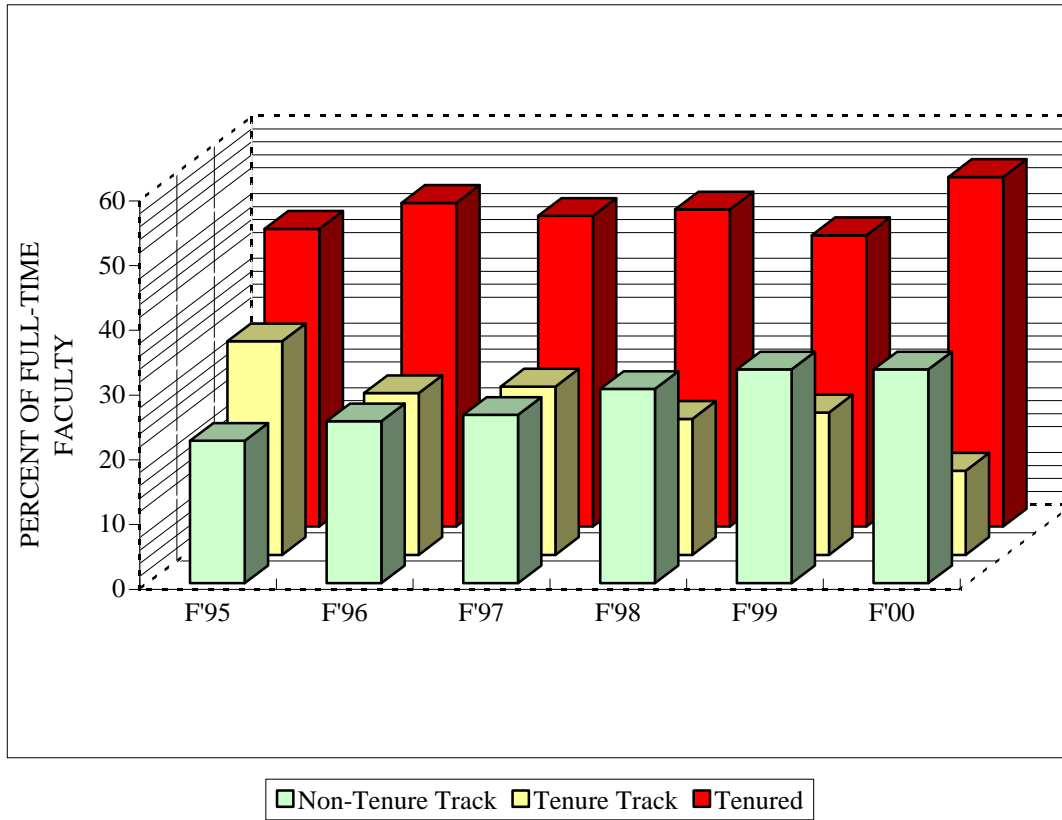


Degree	F'95	F'96	F'97	F'98	F'99	F'00
Doctorate*	82%	83%	83%	86%	83%	81%
Masters	17%	15%	15%	11%	14%	18%
Bachelors	1%	2%	2%	3%	3%	1%

*or an equivalent degree

SOURCE: Office of Institutional Research, Assessment and Planning

**FULL-TIME FACULTY BY TENURE STATUS
FALL 1995-96 THROUGH FALL 2000-01
SPELMAN COLLEGE**



Status	F'95	F'96	F'97	F'98	F'99	F'00
Tenured	46%	50%	48%	49%	45%	54%
Tenure Track	33%	25%	26%	21%	22%	13%
Non-Tenure Track	22%	25%	26%	30%	33%	33%

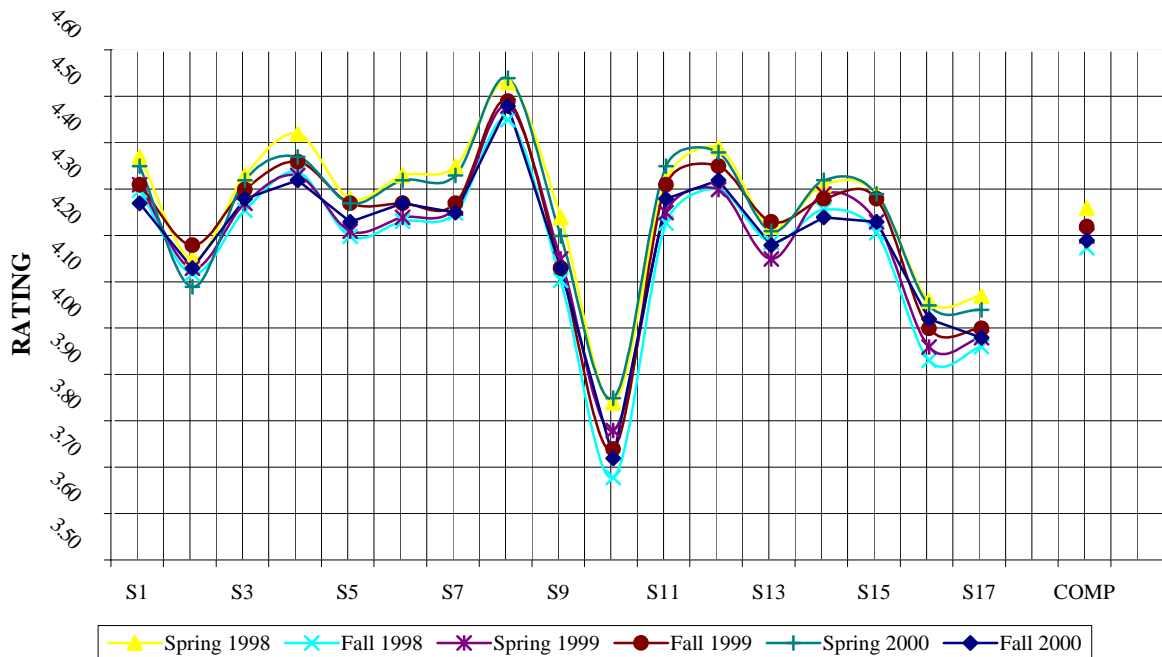
SOURCE: Office of Institutional Research, Assessment and Planning

**STUDENT/FACULTY RATIO
FALL 1996-97 THROUGH FALL 2000-01
SPELMAN COLLEGE**

<u>Year</u>	<u>FTE Students</u>	<u>FTE Faculty</u>	<u>Student/Faculty Ratio</u>
1996-97	1,851	165	11:1
1997-98	1,899	163	12:1
1998-99	1,873	166	11:1
1999-00	2,040	162	13:1
2000-01	2,100	162	13:1

SOURCE: Office of Institutional Research, Assessment & Planning

FACULTY EVALUATION RESULTS SPRING 1998 THROUGH FALL 2000 SPELMAN COLLEGE



Semester	S1	S2	S3	S4	S5	S6	S7	S8	S9	S10	S11	S12	S13	S14	S15	S16	S17	COMP
Spring 1998	4.37	4.15	4.33	4.42	4.28	4.33	4.35	4.53	4.24	3.84	4.32	4.39	4.22	4.31	4.29	4.06	4.07	4.26
Fall 1998	4.30	4.12	4.25	4.34	4.20	4.23	4.25	4.45	4.10	3.68	4.23	4.30	4.19	4.26	4.21	3.93	3.96	4.17
Spring 1999	4.31	4.13	4.27	4.33	4.21	4.24	4.26	4.48	4.15	3.78	4.25	4.30	4.15	4.29	4.23	3.96	3.98	4.20
Fall 1999	4.31	4.18	4.30	4.36	4.27	4.27	4.27	4.49	4.13	3.74	4.31	4.35	4.23	4.28	4.28	4.00	4.00	4.22
Spring 2000	4.35	4.09	4.32	4.37	4.27	4.32	4.33	4.54	4.20	3.85	4.35	4.38	4.21	4.32	4.29	4.05	4.04	4.19
Fall 2000	4.27	4.13	4.28	4.32	4.23	4.27	4.25	4.48	4.13	3.72	4.28	4.32	4.18	4.24	4.23	4.02	3.98	4.19

- S1 - The course objectives and my responsibilities were clearly communicated by the instructor and/or course syllabus.
- S2 - Examinations, reports and papers are graded and returned within a reasonable length of time.
- S3 - The teaching materials are relevant and assist with learning course content.
- S4 - The instructor is well prepared for class.
- S5 - The methods of evaluation (exams, papers, projects, class discussions, etc.) are relevant and consistent with the total course content.
- S6 - Class activities are relevant and assist with learning the course content.
- S7 - This course has increased my knowledge of the subject matter.
- S8 - The instructor has a thorough command of the subject.
- S9 - The subject matter is communicated effectively in the course.
- S10 - The classroom sessions stimulate me to do further intellectual exploration.
- S11 - The instructor respects and interacts fairly with all students.
- S12 - The instructor is positive and responsive to student participation and inquiry.
- S13 - The instructor is available outside of scheduled class time.
- S14 - The course material and expectations are challenging.
- S15 - The instructor is open to discussion about my progress.
- S16 - My final grade will reflect my level of achievement.
- S17 - I would recommend this course to other students.

NOTE: Ratings are based on a scale of 1-5.

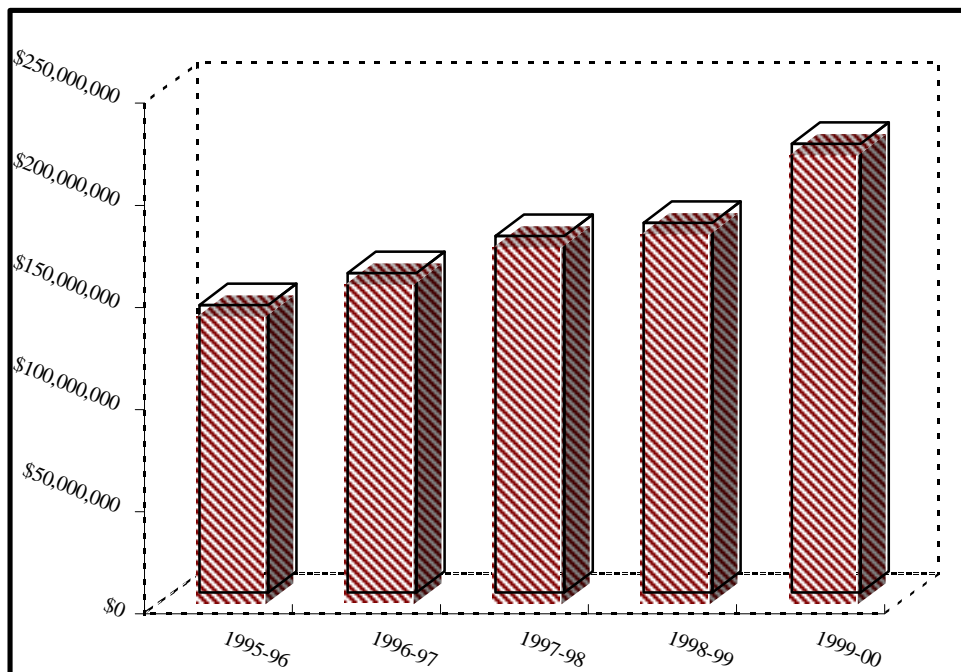
SOURCE: Office of Institutional Research, Assessment and Planning

FINANCIAL AFFAIRS

MARKET VALUE OF THE ENDOWMENT
FISCAL YEARS 1995-96 THROUGH 1999-00
SPELMAN COLLEGE

Year	Market Value	Change Year-to-Year
1995-96	\$140,692,486	14%
1996-97	\$156,376,000	11%
1997-98	\$174,597,146	12%
1998-99	\$181,021,554	4%
1999-00	\$219,753,534	21%

Change - 1995-96 through 1999-00: 56%



Sources: Offices of Business & Financial Affairs and Institutional Research,
 Assessment & Planning

**ALUMNAE
AFFAIRS**

**SPELMAN COLLEGE ALUMNAE
VITAL STATISTICS
2000-01**

The **Spelman College Office of Alumnae Affairs** is committed to developing a comprehensive program to increase alumnae participation in the College mission by focusing on leadership development, recognition and fundraising.

Spelman alumnae represent **10,647 women** in **49 states** and **22 countries** around the world.

Alumnae Demographics

40 years of age & under	60%
41-64 years of age	30%
65 years of age & older	10%

Top career fields among Spelman College Alumnae

Education – Teaching	Law
Education – Administration	Medicine/Health
Business Administration/Management	Physician
Computing/Information Systems	Social Services

The ten states where the largest number of Spelman College alumnae reside, in order, are **Georgia, California, Maryland, New York, Florida, Illinois, Michigan, Texas, Ohio, and New Jersey.**

Office of Alumnae Affairs
350 Spelman Lane, SW
Box 304
Atlanta, Georgia 30314-4399
404-681-3643, ext. 2158
alumnae@spelman.edu

Eloise M. Abernathy, C'86
Director of Alumnae Affairs

Anna A. Scott
Administrative Assistant

**ALUMNAE ASSOCIATION OF SPELMAN COLLEGE
2000-2001**

EXECUTIVE OFFICERS

Ms. Phoebe L. Bailey
President

Ms. Janice Robinson Boger
Assistant Recording Secretary

Ms. Rosa K. Kilpatrick
President Elect

Ms. Ayanay Ferguson Smith
Recording Secretary

Ms. Eloise M. Abernathy Alexis
Vice President

Ms. Keva Wright Berry
Member-at-Large (East)

Ms. Rita Benton Gibson
Treasurer

Ms. Yvonne Jackson
Alumnae Trustee

Ms. Joyce Jelks
Assistant Treasurer

Ms. Ora Sterling King
Constitution/By-Laws Chair

Ms. Mary Glenn Forbes
Financial Secretary

Ms. Marguerite Simon
Historian

Ms. Carol McGee
Corresponding Secretary

COMMITTEE CHAIRPERSONS & SPECIAL CONTACT PERSONS

Ms. Connie Boswell Robinson
Membership Chair

Ms. Lydia Wynn
Credentials Chair

Ms. Dotty Hampton
Awards Chair

Ms. Veronica Wells Haven
Courtesy Chair

Ms. Sylvia Glenn Simmons
Nominations and Chair

Ms. Taronda Spencer
Archivist

Alumnae Association of Spelman College
1999-00

Ms. Janice M. Turner
Parliamentarian

Ms. Pearline Adamson Davis
Immediate Past President

Ms. Stacey Abrams
Attorney

Ms. Mary Lynne Diggs
Art Project Chair

REGIONAL OFFICERS

Far West Region

Ms. Laura Burton Odem
Regional Coordinator (Acting)

Ms. Jocelyn Williams
Regional Treasurer

Ms. Joanna Darce Williams
Secretary

Ms. Gail Atley
Delegate I

Great Lakes Region

Ms. Frieda Hampton McGhee
Regional Coordinator

Ms. Gwendolyn Kenner-Johnson
Secretary-Treasurer

Ms. Barbara Dancy Edwards
Delegate I

Northeast Region

Ms. Johnita Mizelle
Regional Coordinator

Mrs. Jennifer Doggett LaPoint
Secretary-Treasurer

Ms. Shameika Parris
Delegate I

Vacant
Delegate II

South Central Region

Vacant
Regional Coordinator

Vacant
Secretary-Treasurer

Ms. Dorothy M. Steptean
Delegate I

Alumnae Association of Spelman College
2000-01

Southeast Region

Mrs. Juanita Law Barnes
Regional Coordinator

Ms. Sibyl Sims Carley
Secretary-Treasurer

Ms. Tawnya Laughinghouse
Delegate I

Ms. Carolyn Grant
Delegate II

CONTACTS

Dr. Joyce Allen-Clairborne
Albany, GA Chapter

Ms. Sandra Wilson Drakeford
Charlotte, NC Chapter

Ms. Thelma Hurley
Athens, GA Chapter

Ms. Charlotte Stinson Garth
Chattanooga, TN Chapter

Ms. Birdie Ricks Hardon
Atlanta, GA Chapter

Ms. Laura Akridge Morgan
Chicago, IL Chapter

Ms. Demetrice Allen
Augusta, GA Chapter

Ms. Faith Cargile
Cincinnati, OH Chapter

Ms. Spencer Dean
Bahamas Chapter

Ms. Deborah A. Finley
Cleveland, OH Chapter

Ms. Cecily M. Spaulding
Baltimore, MD Chapter

Ms. Marian Rucker Shamu
Columbia, MD Chapter

Ms. Dotty Marie Hampton
Baton Rouge, LA Chapter

Ms. Mattie P. Hall
Columbus, GA Chapter

Ms. Janice Bell McShan
Birmingham, AL Chapter

Ms. Cheryl Wyatt
Columbus, OH Chapter

Ms. Chandra Banks-Gooding
Boston, MA Chapter

Ms. Vicki D. Weatherspoon
Dallas/Ft. Worth, TX Chapter

Alumnae Association of Spelman College
2000-01

Ms. Janice Turner
Decatur, GA Chapter

Ms. Stephanie Green-Cole
Memphis, TN Chapter

Ms. Ginger Johnson Harre

Ms. Yolanda Williamson Wilson

Denver, CO Chapter

Ms. Sonji Smith
Detroit, MI Chapter

Ms. Sherrian White Banks
Hampton, VA Chapter

Ms. Gia R. Ramos
Hollywood/San Fernando Valley, CA

Ms. Dorothea Hunter Carter
Houston, TX Chapter

Ms. Rosa King Kilpatrick
Huntsville, AL Chapter

Ms. Prethenia Kent-Jones
Indianapolis, IN Chapter

Ms. Flora Feggins-Peterson
Jacksonville, FL Chapter

Kim Bailey Tureaud
Las Vegas, NV Chapter

Ms. Angelia Gentry
Los Angeles, CA Chapter

Ms. Renae Murphy
Madison, WI Chapter

Ms. Jennifer Doggett LaPoint
Southern Maryland Chapter

Alumnae Association of Spelman College
2000-01

Ms. Olga Cook Charles
San Diego, CA Chapter

Ms. Gail M. Atley
President, San Francisco/Oakland, CA Chapter

Mississippi (Statewide) Chapter

Ms. Lisa Sims Stewart
President, Montgomery, AL Chapter

Ms. Darlene Abernathy-Neely
Nashville, TN Chapter

Ms. Valeria Henson-Fulton
New Orleans, LA Chapter

Ms. Dineen J. Whit
Northern New Jersey Chapter

Ms. Dawn L. Hankin
President, New York Chapter

Ms. Brenda L. Primas
Oklahoma (Statewide) Chapter

Ms. Jean Jackson Moore
Orlando, FL Chapter

Ms. Connie Boswell Robinson
Philadelphia, PA Chapter

Ms. Vanessa Powell
Phoenix, AZ Chapter

Ms. Aisha Shamburger
Metro Richmond, VA Chapter

Ms. Tammura Hawthorn
Sacramento, CA Chapter

Ms. Saeed Singletary
Southern Illinois Chapter

Ms. Renee Wilford Gates
St. Louis, MO Chapter

Ms. Sharon Ellis Bussey
Savannah, GA Chapter

Dr. Gloria Price Holmes
Tallahassee, FL Chapter

Ms. Pat Chatard
Seattle, WA Chapter

Ms. Dorothy J. Bell
Tampa, FL Chapter

Ms. Kwanza Clay
South Florida Chapter

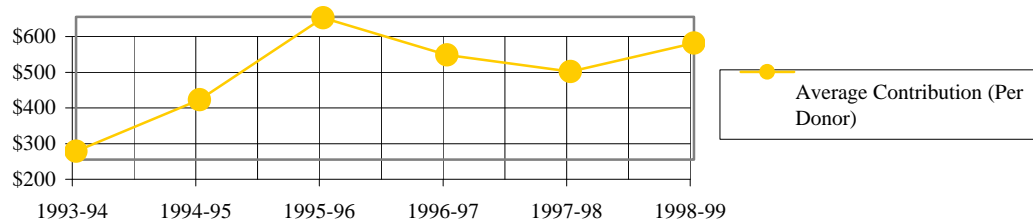
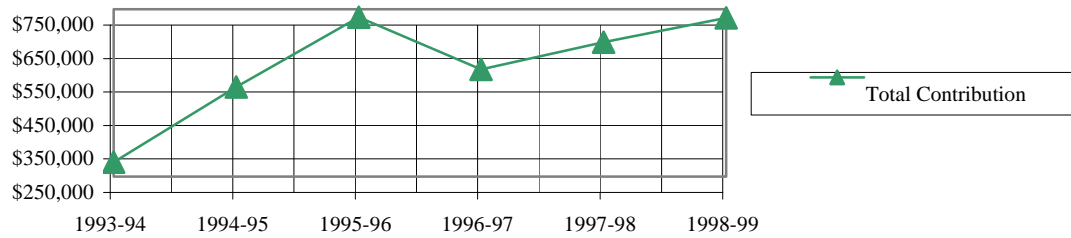
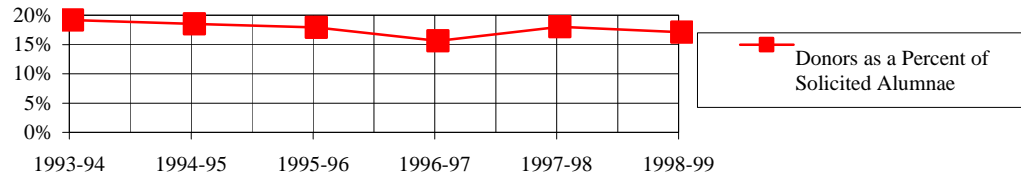
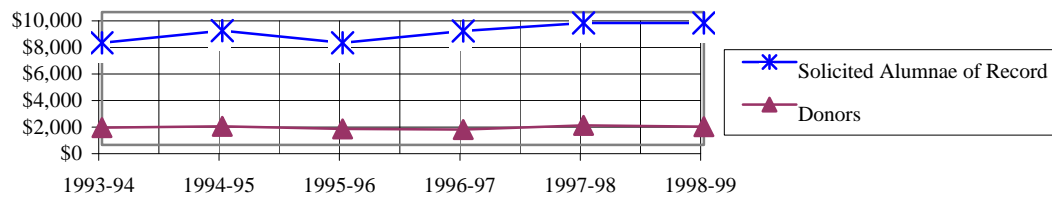
Ms. Cassandra Morgan
Washington, D.C. Chapter

Ms. Kamela Heyward Rotimi
Triangle (Raleigh-Durham-Chapel Hill) Chapter

SOURCE: National Alumnae Association of Spelman College, Office of Alumnae Affairs,
Institutional Advancement

ANNUAL ALUMNAE GIVING 1993-94 THROUGH 1998-99 SPELMAN COLLEGE

Category	1993-94	1994-95	1995-96	1996-97	1997-98	1998-99
Undergraduate Alumnae of Record	7,681	8,602	8,739	8,568	9,169	9,469
Solicited Alumnae of Record (at least once during the year)	7,681	8,602	7,690	8,568	9,169	9,169
Donors	1,310	1,408	1,215	1,155	1,459	1,375
Donors as a Percent of Solicited Alumnae of Record	17%	16%	16%	13%	16%	15%
Total Contribution	\$292,915	\$517,264	\$726,155	\$570,039	\$651,951	\$724,133
Average Contribution (Per Donor)	\$224	\$367	\$598	\$494	\$447	\$527



*"Alumnae of Record" are former students who were enrolled either full- or part-time who graduated from Spelman for whom there are current addresses.

Note: Donor figures do not include NAASC gifts.

SOURCE: Office of Institutional Advancement: Office of the Vice President